

33 865 895



- 200mm projection
- Flexible silicone hose with large operating range of up to 350 mm
- pivotable 360°
- Optional swivel limiter available with swivel limiter set 12 821 970 90
- air-enriched flow and spray flow
- height of mixer 451 mm
- height up to aerator 119 mm
- hole diameter 35 mm
- 2 x pressure hose with 3/8" cap nut
- sprayface with anti-scaling system
- max. flow 5.7 l/min at 3 bar flow pressure
- lead-free
- This product can help a building meet the requirements of Green Building Rating Systems, e.g. LEED®, BREEAM®, DGNB

Intrinsic protection against back flow.

Switch back and forth between aerator and spray mode while water is running.

| | | |
|--|--------------------------------|--------------------|
| | Brushed Champagne (22kt Gold) | 33 865 895-46 0010 |
| | Chrome | 33 865 895-00 0010 |
| | Brushed Platinum | 33 865 895-06 0010 |
| | Platinum | 33 865 895-08 0010 |
| | Durabronze (23kt Gold) | 33 865 895-09 0010 |
| | Dark Chrome | 33 865 895-19 0010 |
| | Brushed Durabronze (23kt Gold) | 33 865 895-28 0010 |
| | Matte Black | 33 865 895-33 0010 |
| | Champagne (22kt Gold) | 33 865 895-47 0010 |
| | Brushed Chrome | 33 865 895-93 0010 |
| | Brushed Dark Platinum | 33 865 895-99 0010 |

Recommended miscellaneous



Swivel limitation set - 12 821 970 90

Recommended miscellaneous



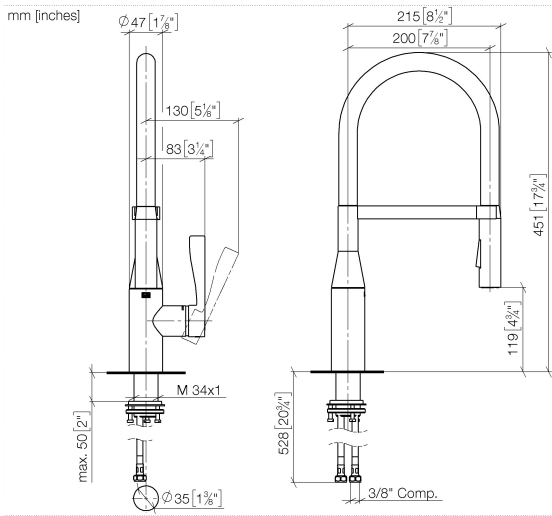
**Dispenser without rosette -
Brushed Champagne (22kt Gold)** 82 424 970-46

Recommended miscellaneous

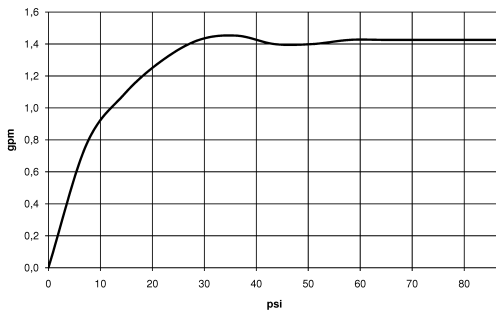


**AIR SWITCH Control button -
Brushed Champagne (22kt Gold)** 10 713 970-46

33 865 895



Flow rate chart



Codes & Standards

ADA

ASME
A112.18.1/CSA
B125.1

California Energy
Commission
(CEC)

NSF/ANSI 372

NSF/ANSI/CAN
61



SYNC Profi single-lever mixer - Brushed Champagne (22kt Gold)

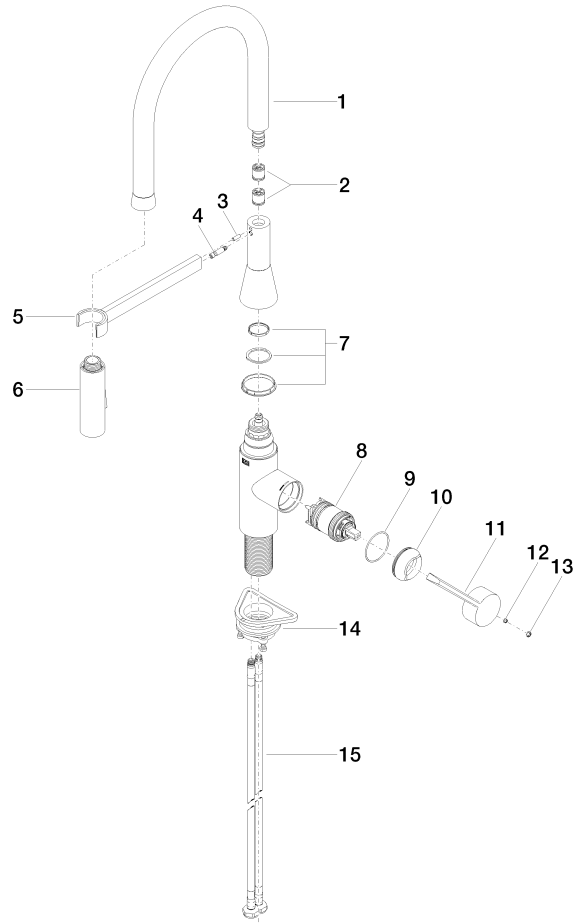
SYNC

33 865 895

Certificates

IAPMO_N-4976 (2). IAPMO_6397 (1).

33 865 895



Spare parts list

| No. | Item Number | Name | Quantity used | Delivery time |
|-----|--------------------|---------------------|---------------|---------------|
| 1 | 90 30 02 100 00-46 | hose | 1 | 30 |
| 2 | 90 23 01 141 00 90 | back-flow preventer | 1 | 2 |
| 3 | 09 31 11 040 90 | pin | 1 | 2 |
| 4 | 09 31 11 209 90 | pin | 1 | 2 |
| 5 | 90 17 20 045 00-46 | holder | 1 | 30 |
| 6 | 04 12 11 150 00 90 | shower | 1 | 2 |
| 7 | 90 28 10 161 00 90 | set | 1 | 2 |
| 8 | 90 15 05 064 05 90 | cartridge | 1 | 2 |
| 9 | 09 14 10 190 90 | seal | 1 | 2 |
| 10 | 09 28 30 030-46 | cover | 1 | 60 |
| 11 | 09 20 89 020-46 | handle | 1 | 30 |
| 12 | 90 31 11 063 00 90 | pin | 1 | 2 |
| 13 | 90 31 20 087 00-46 | plug | 1 | 30 |
| 14 | 04 30 11 040 00 90 | fixing set | 1 | 2 |
| 15 | 04 30 04 103 00 90 | hose | 2 | 2 |