

33 870 790



- 235mm projection
- pivotable spout 360°
- laminar and spray flow
- height of mixer 342 mm
- height up to aerator 292 mm
- hole diameter 35 mm
- 2 x pressure hose with 3/8" cap nut
- fabric braided hose 1500 mm
- max. flow 5.7 l/min at 3 bar flow pressure
- lead-free
- This product can help a building meet the requirements of Green Building Rating Systems, e.g. LEED®, BREEAM®, DGNB

Intrinsic protection against back flow.

Push button locks into spray mode when pressed. To switch back to aerator mode the water must be turned off.

	Champagne (22kt Gold)	33 870 790-47 0010
	Chrome	33 870 790-00 0010
	Brushed Platinum	33 870 790-06 0010
	Platinum	33 870 790-08 0010
	Dark Chrome	33 870 790-19 0010
	Brushed Durabronze (23kt Gold)	33 870 790-28 0010
	Brushed Champagne (22kt Gold)	33 870 790-46 0010
	Brushed Chrome	33 870 790-93 0010
	Brushed Dark Platinum	33 870 790-99 0010

Recommended miscellaneous

Dispenser without rosette - Champagne (22kt Gold) 82 424 970-47

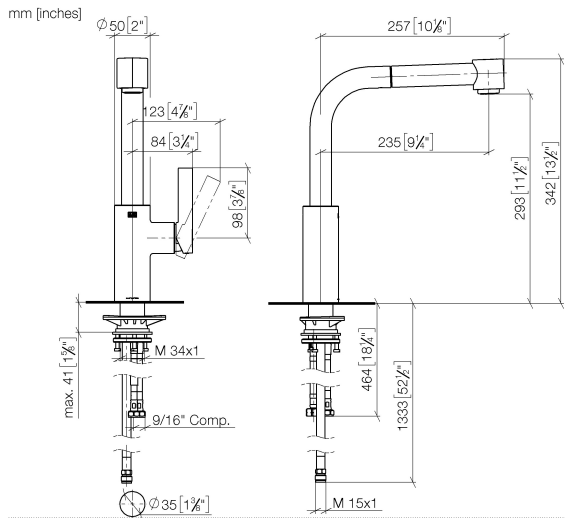


Recommended miscellaneous

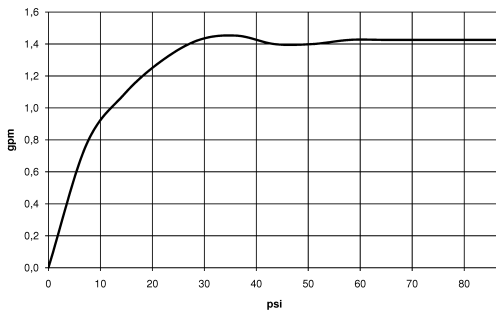
AIR SWITCH Control button - Champagne (22kt Gold) 10 713 970-47



33 870 790



Flow rate chart



Codes & Standards

ADA

ASME
A112.18.1/CSA
B125.1

California Energy
Commission
(CEC)

NSF/ANSI 372

NSF/ANSI/CAN
61



ELIO Single-lever mixer Pull-out with spray function - Champagne (22kt Gold)

ELIO

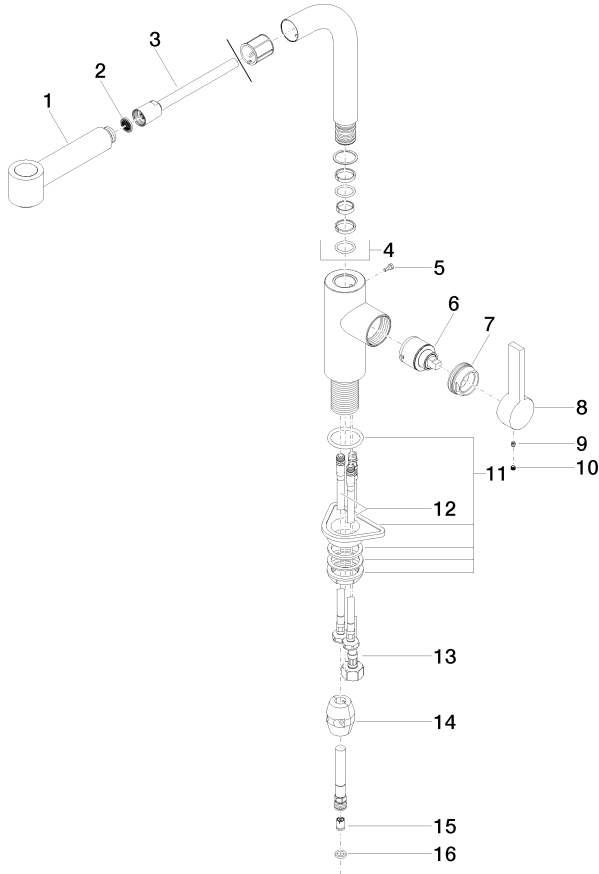
33 870 790

Certificates

IAPMO_N-4976 (2). IAPMO_6397 (1).

33 870 790

Parts for other finishes can be found here: [Chrome](#)



Spare parts list

No.	Item Number	Name	Quantity used	Delivery time
1	04 12 11 102 00-47	shower	1	30
2	09 23 01 039 90	sieve	1	2
3	90 30 02 062 00-47	hose	1	-
Spare part can no longer be ordered, please order the replacement item				
4	90 28 22 186 00-47	spout	1	30
5	09 30 30 054 90	screw	1	2
6	90 15 05 045 00 90	cartridge	1	2
7	09 24 04 141-47	nut	1	30
8	09 20 79 040-47	handle	1	30
9	90 31 11 030 00 90	pin	1	2
10	90 31 20 109 00 90	plug	1	2
11	04 23 10 044 02 90	fixing set	1	2
12	04 30 04 106 00 90	hose	2	2
13	04 30 04 029 00 90	hose	1	2
14	04 21 50 005 00 90	accessories	1	2
15	09 23 01 096 90	back-flow preventer	1	2
16	90 14 20 019 00 90	seal	1	2