

## VAIA Single-lever mixer Pull-down with spray function - Chrome

VAIA

33 870 809 Product version from 7/1/2023



- 240mm projection
- pivotable spout 360°
- Optional swivel limiter available with swivel limiter set 12 823 970 90
- air-enriched flow and spray flow
- height of mixer 416 mm
- height up to laminar flow regulator 228 mm
- hole diameter 35 mm
- 2 x pressure hose with 3/8" cap nut
- 1800 mm metal shower hose
- sprayface with anti-scaling system
- max. flow 5.7 l/min at 3 bar flow pressure
- lead-free
- Flow modes can be changed while the water is running
- This product can help a building meet the requirements of Green Building Rating Systems, e.g. LEED®, BREEAM®, DGNB

Intrinsic protection against back flow.

Switch back and forth between aerator and spray mode while water is running.

|  |                               |                    |
|--|-------------------------------|--------------------|
|  | Chrome                        | 33 870 809-00 0010 |
|  | Brushed Platinum              | 33 870 809-06 0010 |
|  | Platinum                      | 33 870 809-08 0010 |
|  | Durabrass (23kt Gold)         | 33 870 809-09 0010 |
|  | Dark Chrome                   | 33 870 809-19 0010 |
|  | Brushed Durabrass (23kt Gold) | 33 870 809-28 0010 |
|  | Matte Black                   | 33 870 809-33 0010 |
|  | Brushed Bronze                | 33 870 809-42 0010 |
|  | Brushed Champagne (22kt Gold) | 33 870 809-46 0010 |
|  | Champagne (22kt Gold)         | 33 870 809-47 0010 |
|  | Brushed Chrome                | 33 870 809-93 0010 |
|  | Brushed Dark Platinum         | 33 870 809-99 0010 |

### Recommended miscellaneous

**Swivel limitation set -**

12 823 970 90



### Recommended miscellaneous

**VAIA AIR SWITCH Control button - 10 713 809-00 Chrome**



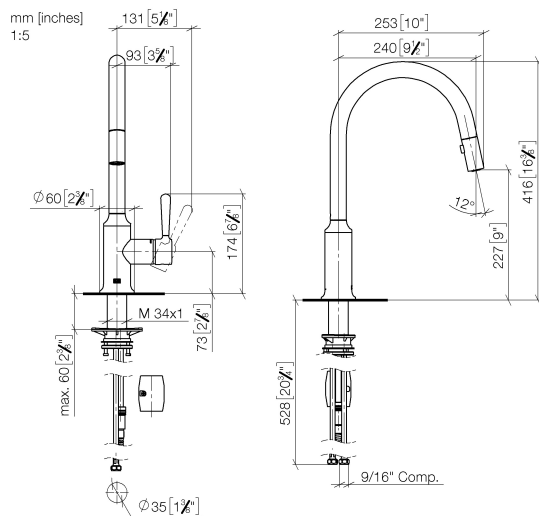
### Recommended miscellaneous

**VAIA Dispenser with rosette - Chrome**

82 434 809-00



33 870 809 Product version from 7/1/2023

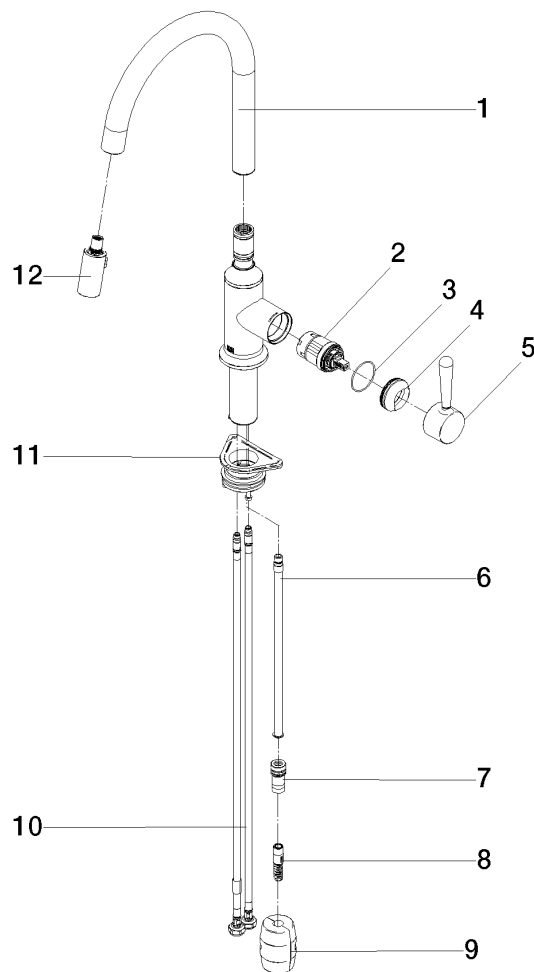


## Codes & Standards

|        |                |  |      |
|--------|----------------|--|------|
| ADA    | ASME A112.18.1 | California Energy<br>Commission<br>(CEC) | cUPC |
| NSF372 | NSF61          |  |      |

## Certificates and sustainability

IAPMO\_N-4976 IAPMO\_6397 IAPMO\_4976 (



## Spare parts list

| No. | Item Number        | Name        | Quantity used | Delivery time |
|-----|--------------------|-------------|---------------|---------------|
| 4   | 09 28 30 030-00    | cover       | 1.00          | 10            |
| 1   | 90 28 22 397 00-00 | spout       | 1.00          | 10            |
| 7   | 90 24 03 253 01 90 | adaptor     | 1.00          | 2             |
| 6   | 04 28 20 067 00 90 | pipe        | 1.00          | 2             |
| 5   | 90 20 80 052 00-00 | handle      | 1.00          | 10            |
| 2   | 90 15 05 064 05 90 | cartridge   | 1.00          | 2             |
| 3   | 09 14 10 190 90    | seal        | 1.00          | 2             |
| 10  | 04 30 04 103 00 90 | hose        | 2.00          | 2             |
| 8   | 04 30 02 120 00-00 | hose        | 1.00          | 10            |
| 9   | 04 21 50 010 00 90 | accessories | 1.00          | 2             |
| 12  | 90 18 40 317 00-00 | shower      | 1.00          | 10            |
| 11  | 04 30 11 040 00 90 | fixing set  | 1.00          | 2             |