

TARA ULTRA Single-lever mixer Pull-down with spray function - Chrome

TARA ULTRA

33 870 875 Product version from 2/26/2015 to 10/30/2024



- 240mm projection
- pivotable spout 360°
- Optional swivel limiter available with swivel limiter set 12 823 970 90
- laminar and spray flow
- height of mixer 500 mm
- height up to laminar flow regulator 240 mm
- hole diameter 35 mm
- 2 x pressure hose with 3/8" cap nut
- 1800 mm metal shower hose
- sprayface with anti-scaling system
- max. flow 5.7 l/min at 3 bar flow pressure
- lead-free
- Flow modes can be changed while the water is running
- This product can help a building meet the requirements of Green Building Rating Systems, e.g. LEED®, BREEAM®, DGNB

Intrinsic protection against back flow.

Push button locks into spray mode when pressed. To switch back to laminar flow the water must be turned off.

	Chrome	33 870 875-00 0010
	Brushed Platinum	33 870 875-06 0010
	Platinum	33 870 875-08 0010
	Durabrass (23kt Gold)	33 870 875-09 0010
	Dark Chrome	33 870 875-19 0010
	Brushed Durabrass (23kt Gold)	33 870 875-28 0010
	Matte Black	33 870 875-33 0010
	Brushed Bronze	33 870 875-42 0010
	Brushed Champagne (22kt Gold)	33 870 875-46 0010
	Champagne (22kt Gold)	33 870 875-47 0010
	Brushed Chrome	33 870 875-93 0010
	Brushed Dark Platinum	33 870 875-99 0010

Recommended miscellaneous

	Swivel limitation set -	12 823 970 90
--	--------------------------------	---------------

Recommended miscellaneous

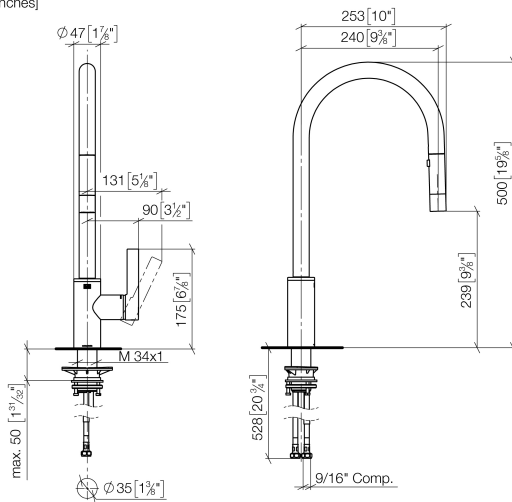
	AIR SWITCH Control button - Chrome	10 713 970-00
--	---	---------------

Recommended miscellaneous

	Dispenser without rosette - Chrome	82 424 970-00
--	---	---------------

33 870 875 Product version from 2/26/2015 to 10/30/2024

mm [inches]

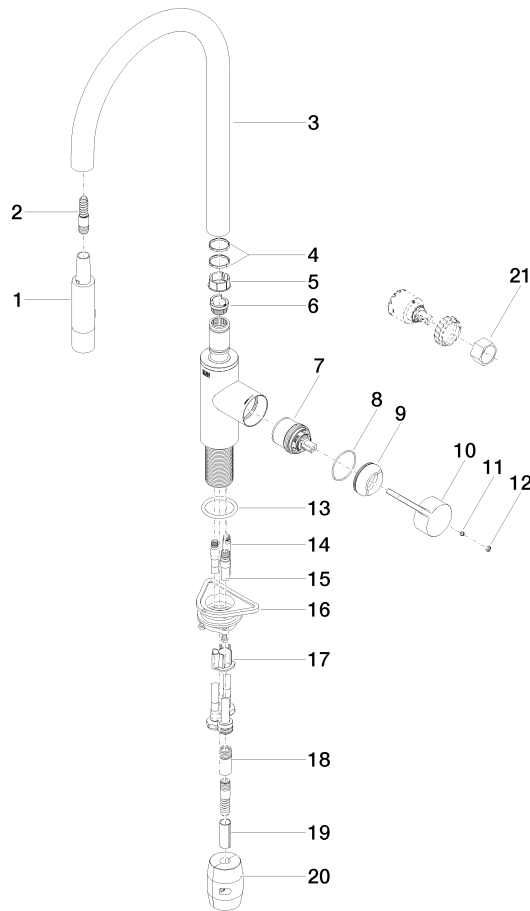


Codes & Standards

ADA	ASME A112.18.1	California Energy Commission (CEC)	cUPC
NSF372	NSF61		

Certificates and sustainability

IAPMO_N-4976 IAPMO_6397 IAPMO_4976 (



Spare parts list

No.	Item Number	Name	Quantity used	Delivery time
8	09 14 10 190 90	seal	1.00	2
16	04 30 11 040 00 90	fixing set	1.00	2
12	90 31 20 087 00-00	plug	1.00	10
5	09 18 40 186 90	sleeve	1.00	2
15	04 28 20 067 00 90	pipe	1.00	2
2	04 30 02 120 00-00	hose	1.00	10
17	09 20 93 056 90	insert	1.00	2
6	09 30 11 203 90	ring	1.00	2
3	90 28 22 304 00-00	spout	1.00	10
20	04 21 50 010 00 90	accessories	1.00	2
19	09 30 03 038 90	hose	1.00	2
10	09 20 87 020-00	handle	1.00	10
4	09 28 10 160 90	ring	2.00	2
9	09 28 30 030-00	cover	1.00	10
18	90 24 03 253 01 90	adaptor	1.00	2
13	09 14 10 036 90	seal	1.00	2
14	04 30 04 103 00 90	hose	2.00	2
11	90 31 11 063 00 90	pin	1.00	2
1	90 12 11 148 00-00	shower	1.00	60
21	90 30 09 031 00 90	key	1.00	2
7	90 15 05 064 05 90	cartridge	1.00	2