

SYNC Single-lever mixer Pull-down with spray function - Brushed Dark Platinum

SYNC

33 875 895 Product version from 2/26/2015



- 240mm projection
- pivotable spout 360°
- Optional swivel limiter available with swivel limiter set 12 821 970 90
- laminar and spray flow
- height of mixer 420 mm
- height up to laminar flow regulator 240 mm
- hole diameter 35 mm
- 2 x pressure hose with 3/8" cap nut
- 1800 mm metal shower hose
- sprayface with anti-scaling system
- max. flow 5.7 l/min at 3 bar flow pressure
- lead-free
- Flow modes can be changed while the water is running
- This product can help a building meet the requirements of Green Building Rating Systems, e.g. LEED®, BREEAM®, DGNB

Intrinsic protection against back flow.

Push button locks into spray mode when pressed. To switch back to laminar flow the water must be turned off.

	Brushed Dark Platinum	33 875 895-99 0010
	Chrome	33 875 895-00 0010
	Brushed Platinum	33 875 895-06 0010
	Platinum	33 875 895-08 0010
	Durabronze (23kt Gold)	33 875 895-09 0010
	Dark Chrome	33 875 895-19 0010
	Brushed Durabronze (23kt Gold)	33 875 895-28 0010
	Matte Black	33 875 895-33 0010
	Brushed Bronze	33 875 895-42 0010
	Brushed Champagne (22kt Gold)	33 875 895-46 0010
	Champagne (22kt Gold)	33 875 895-47 0010
	Brushed Chrome	33 875 895-93 0010

Recommended miscellaneous

Swivel limitation set -

12 821 970 90



Recommended miscellaneous

AIR SWITCH Control button -
Brushed Dark Platinum

10 713 970-99



Recommended miscellaneous

Dispenser without rosette -
Brushed Dark Platinum

82 424 970-99



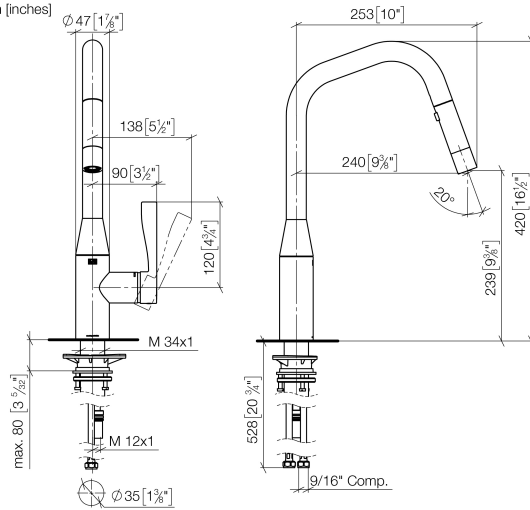


SYNC Single-lever mixer Pull-down with spray function - Brushed Dark Platinum

SYNC

33 875 895 Product version from 2/26/2015

mm [inches]

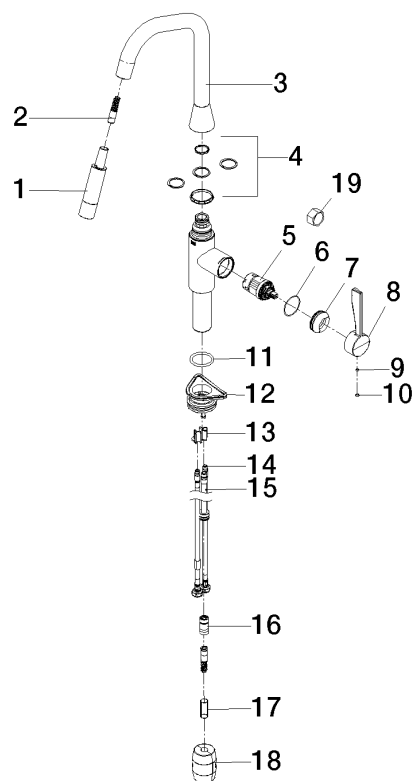


Codes & Standards

ADA	ASME A112.18.1	California Energy Commission (CEC)	cUPC
NSF372	NSF61		

Certificates and sustainability

IAPMO_N-4976 IAPMO_6397 IAPMO_4976 (



Spare parts list

No.	Item Number	Name	Quantity used	Delivery time
	17 09 30 03 038 90	hose	1.00	2
	8 09 20 89 020-99	handle	1.00	20
	7 09 28 30 030-99	cover	1.00	20
	16 90 24 03 253 01 90	adaptor	1.00	2
	6 09 14 10 190 90	seal	1.00	2
	10 90 31 20 087 00-99	plug	1.00	20
	3 90 28 22 301 00-99	spout	1.00	20
	18 04 21 50 010 00 90	accessories	1.00	2
	9 90 31 11 063 00 90	pin	1.00	2
	19 90 30 09 031 00 90	key	1.00	2
	1 90 12 11 184 00-99	shower	1.00	20
	2 04 30 02 120 00-99	hose	1.00	-
Spare part can no longer be ordered, please order the replacement item				
	5 90 15 05 046 05 90	cartridge	1.00	2
	4 12 821 970 90	Swivel limitation set -	1.00	2
	15 04 28 20 067 00 90	pipe	1.00	2
	14 04 30 04 103 00 90	hose	2.00	2
	12 04 30 11 040 00 90	fixing set	1.00	2
	11 09 14 10 036 90	seal	1.00	2
	13 09 20 93 056 90	insert	1.00	2