

ENO Single-lever mixer Pull-out with spray function - Dark Chrome

ENO

33 876 760
Product version from 4/1/2024



- 206mm projection
 - pivotable spout 130°
 - air-enriched flow and spray flow
 - height of mixer 253 mm
 - height up to aerator 179 mm
 - hole diameter 35 mm
 - 2 x pressure hose with 3/8" cap nut
 - 1600mm metal shower hose
 - max. flow 5.7 l/min at 3 bar flow pressure
 - lead-free
 - This product can help a building meet the requirements of Green Building Rating Systems, e.g. LEED®, BREEAM®, DGNB

Intrinsic protection against back flow.

Can be toggled between aerated stream and spray mode while water is running.

| | | |
|--|-------------------------------|--------------------|
|  | Dark Chrome | 33 876 760-19 0010 |
|  | Chrome | 33 876 760-00 0010 |
|  | Brushed Platinum | 33 876 760-06 0010 |
|  | Platinum | 33 876 760-08 0010 |
|  | Brushed Durabrass (23kt Gold) | 33 876 760-28 0010 |
|  | Brushed Bronze | 33 876 760-42 0010 |
|  | Brushed Champagne (22kt Gold) | 33 876 760-46 0010 |
|  | Champagne (22kt Gold) | 33 876 760-47 0010 |
|  | Brushed Chrome | 33 876 760-93 0010 |
|  | Brushed Dark Platinum | 33 876 760-99 0010 |

Recommended miscellaneous

AIR SWITCH Control button - Dark Chrome

10 713 970-19



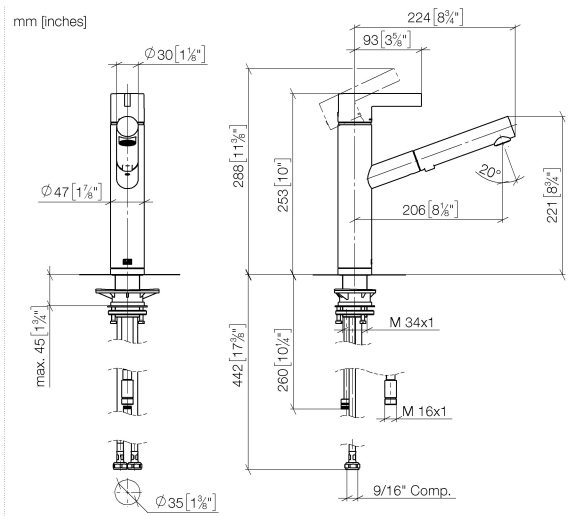
Recommended miscellaneous

Dispenser without rosette - Dark Chrome

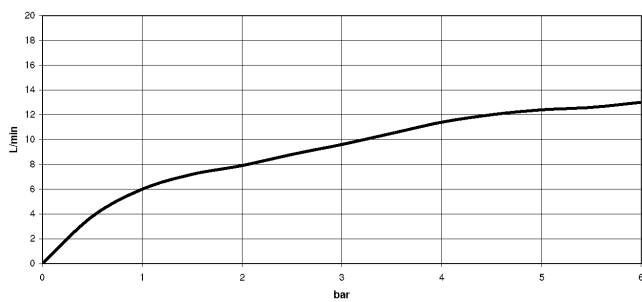
82 424 970-19



33 876 760 Product version from 4/1/2024



Flow rate chart



Codes & Standards

ADA

ASME A112.18.1

cUPC

NSF372

NSF61



ENO Single-lever mixer Pull-out with spray function - Dark Chrome

ENO

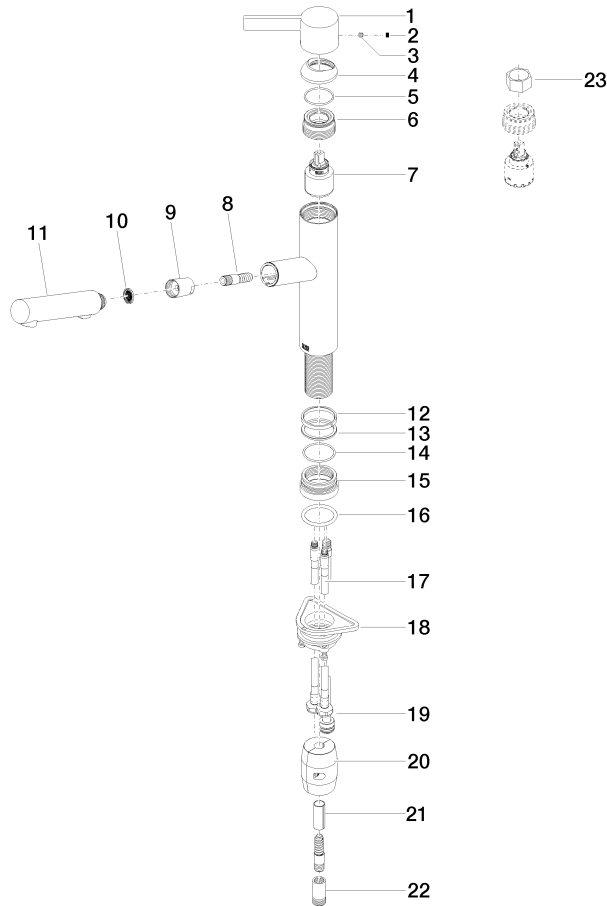
33 876 760 Product version from 4/1/2024

Certificates and sustainability

IAPMO_N-4976 IAPMO_6397 IAPMO_4976 (

33 876 760 Product version from 4/1/2024

Parts for other
finishes can be found
here: [Chrome](#)





ENO Single-lever mixer Pull-out with spray function - Dark Chrome

ENO

33 876 760 Product version from 4/1/2024

Spare parts list

| No. | Item Number | Name | Quantity used | Delivery time |
|--|--------------------|-------------|---------------|---------------|
| 23 | 90 30 09 031 00 90 | key | 1.00 | 2 |
| 7 | 90 15 05 064 00 90 | cartridge | 1.00 | 2 |
| 21 | 09 30 03 038 90 | hose | 1.00 | 2 |
| 3 | 90 31 11 030 00 90 | pin | 1.00 | 2 |
| 6 | 09 24 04 270 90 | nut | 1.00 | 2 |
| 17 | 04 30 04 103 00 90 | hose | 2.00 | 2 |
| 15 | 09 27 76 001-19 | rosette | 1.00 | 60 |
| 18 | 04 30 11 040 00 90 | fixing set | 1.00 | 2 |
| 13 | 09 28 10 144 90 | ring | 1.00 | 2 |
| 22 | 90 24 03 253 01 90 | adaptor | 1.00 | 2 |
| 8 | 04 30 02 121 00-19 | hose | 1.00 | - |
| Spare part can no longer be ordered, please order the replacement item | | | | |
| 5 | 09 14 10 102 90 | seal | 1.00 | 2 |
| 11 | 90 12 11 185 00-19 | shower | 1.00 | - |
| Spare part can no longer be ordered, please order the replacement item | | | | |
| 1 | 09 20 76 001-19 | handle | 1.00 | 60 |
| 20 | 04 21 50 010 00 90 | accessories | 1.00 | 2 |
| 4 | 09 28 30 012-19 | cover | 1.00 | 60 |
| 19 | 04 28 20 067 00 90 | pipe | 1.00 | 2 |
| 16 | 09 14 10 036 90 | seal | 1.00 | 2 |
| 12 | 09 14 15 029 90 | ring | 1.00 | 2 |
| 9 | 90 24 03 358 00-19 | sleeve | 1.00 | 20 |
| 14 | 09 14 10 034 90 | seal | 1.00 | 2 |
| 10 | 09 23 01 039 90 | sieve | 1.00 | 2 |
| 2 | 90 31 20 109 00 90 | plug | 1.00 | 2 |