

34 201 979 Product version from 9/1/2022



- 210mm projection
- circular normal flow
- rotary diverter with volume control and shut-off function
- 3/8" shower outlet
- slide-on rosettes Ø 60 mm
- 1/2" connection
- gauge 150 mm - 15 mm
- max. flow 16.9 l/min at 3 bar flow pressure
- WRAS

Intrinsic protection against back flow.

Intrinsic protection against back flow.

	Brushed Platinum	34 201 979-06
	Chrome	34 201 979-00
	Dark Chrome	34 201 979-19
	Light Gold	34 201 979-26
	Brushed Light Gold	34 201 979-27
	Matte Black	34 201 979-33
	Brushed Bronze	34 201 979-42
	Brushed Champagne (22kt Gold)	34 201 979-46
	Champagne (22kt Gold)	34 201 979-47
	Brushed Chrome	34 201 979-93
	Brushed Dark Platinum	34 201 979-99

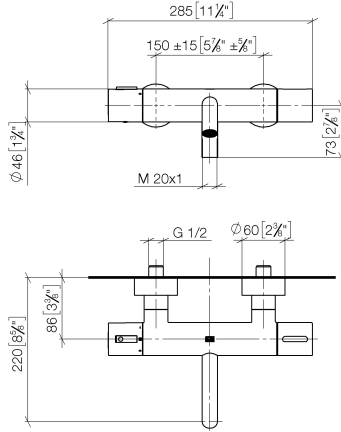
Required miscellaneous



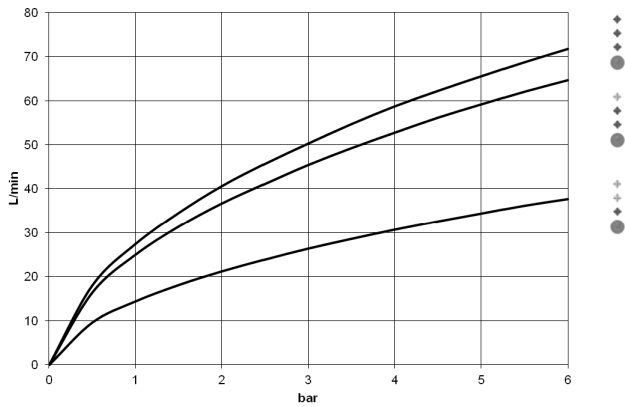
- Concealed adapter -** 35 080 970-90
- please order two adapters (USA only) 0010

34 201 979 Product version from 9/1/2022

mm [inches]



Flow rate chart



Codes & Standards

California Energy Commission (CEC)	DIN 4109	EN 1717	ISO 3822
Scottish Water Byelaws	UK Water Supply Regulations	Ü-Zeichen	



META Bath thermostat for wall mounting without shower set - Brushed Platinum

META

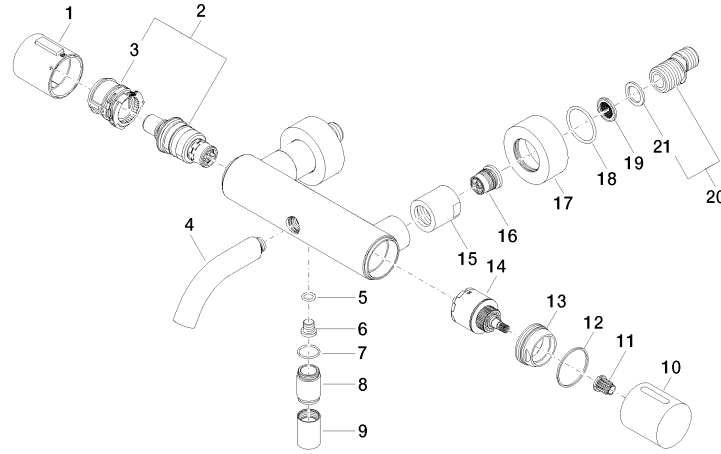
34 201 979 Product version from 9/1/2022

Certificates

LGA_18

WRAS_2201

Belgaqua_21-032-2



Spare parts list

No.	Item Number	Name	Quantity used	Delivery time
1	90 17 33 020 00-06	handle	1	10
2	90 15 02 070 00 90	cartridge	1	2
3	90 30 40 010 00 90	regulator	1	2
4	90 11 06 214 00-06	spout	1	10
5	09 14 10 139 90	seal	1	2
6	08 30 30 701 90	screw	1	2
7	90 14 10 032 00 90	seal	1	2
8	09 24 03 115 20-06	nipple	1	10
9	90 21 02 069 00-06	cover	1	10
10	09 20 97 020-06	handle	1	10
11	90 12 12 002 00 90	fixing cap	1	2
12	09 14 15 052 90	ring	1	2
13	09 24 04 141-06	nut	1	10
14	90 15 05 033 00 90	diverter	1	2
15	09 23 10 048-06	nut	2	10
16	90 29 05 024 00 90	nipple	2	2
17	09 27 62 004-06	rosette	2	10
18	09 14 10 119 90	seal	2	2
19	09 29 03 020 90	insert	2	2
20	04 11 04 032 00 90	connection	2	2
21	09 14 20 010 90	seal	2	2