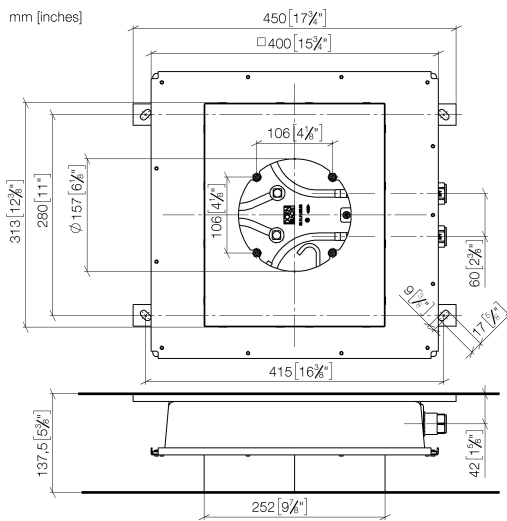




- concealed rough parts
- 2x female thread 1/2" connections
- flush-mounted RAL 9003 signal white light reflection box 310 x 250 mm
- For simultaneous control of the jet types, we recommend the xTool thermostat module
- Not suitable for use in a steam room.

Pre-assembly kit for three-way diverter included

35 043 970 Product version from 4/1/2022

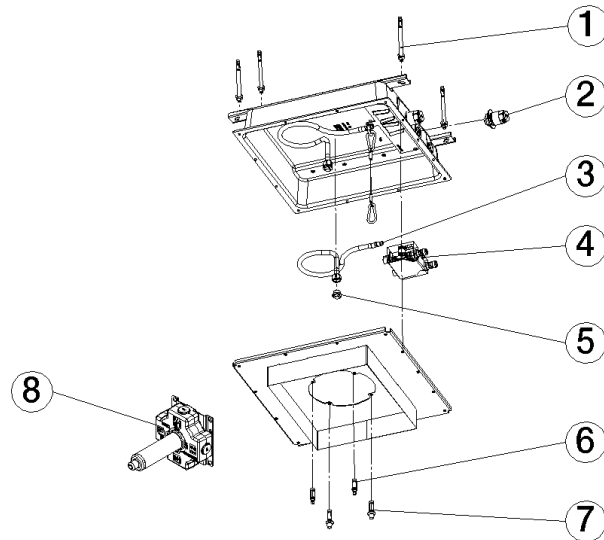


## Codes & Standards

ASME A112.18.1 cUPC

## Certificates and sustainability

IAPMO\_4976 (



## Spare parts list

No.	Item Number	Name	Quantity used	Delivery time
7	90 30 01 215 00 90	fixing set	1.00	2
5	09 31 20 042 90	plug	2.00	2
4	90 30 01 216 10 90	Venting service kit	1.00	2
3	04 30 04 097 00 90	hose	2.00	60
6	90 21 40 065 01 90	fixing set	1.00	2
8	90 17 01 263 00 90	diverter	1.00	2
2	90 24 03 306 00 90	fixing set	2.00	2
1	04 30 35 008 00 90	fixing set	1.00	2