

## Concealed three-way diverter -

SERIES SPECIFIC

35 204 970 Product version from 1/1/2023



- red brass, lead-free
- 1x female thread 1/2" connections
- 3x female thread 1/2" outlet
- cut-to-length spindle and sleeve
- dust cover
- anti-water packing
- soundproofing

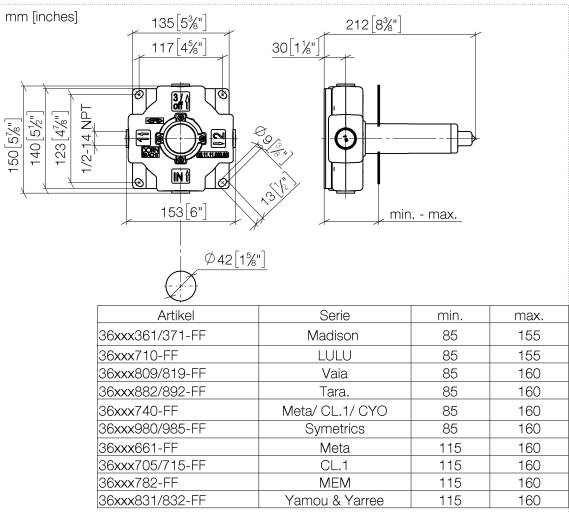
NOTE: Important for certain series!  
Due to minimum rough-in requirements, a framing  
of 2x6 studs is needed.

Concealed three-way diverter -

SERIES SPECIFIC

35 204 970

Product version from 1/1/2023



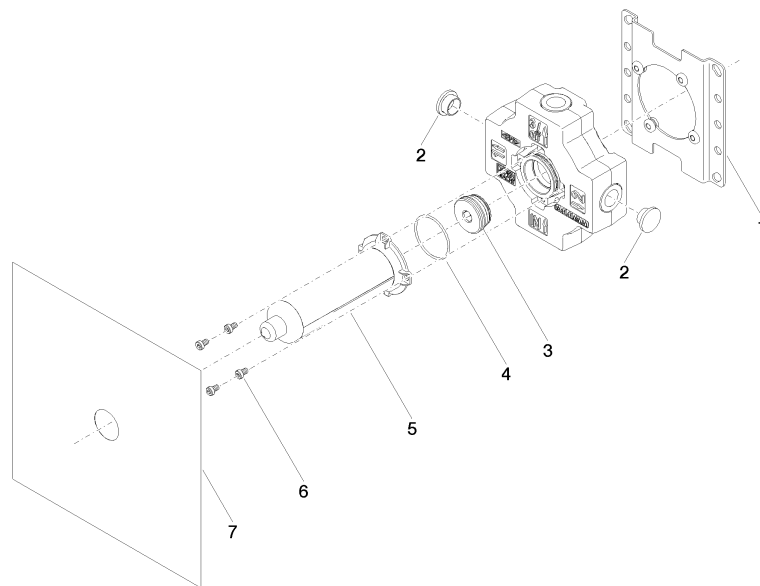
Codes & Standards

ASME A112.18.1

cUPC

Certificates and sustainability

IAPMO\_4976 (



## Spare parts list

No.	Item Number	Name	Quantity used	Delivery time
5	04 21 02 180 10 90	cap	1.00	2
2	09 31 20 092 90	plug	1.00	2
7	04 14 03 116 00 90	gasket kit	1.00	2
1	04 17 20 252 00 90	base	1.00	60
4	09 14 10 210 90	seal	1.00	2
6	09 30 30 112 90	screw	1.00	2
3	90 31 20 131 00 90	plug	1.00	2