


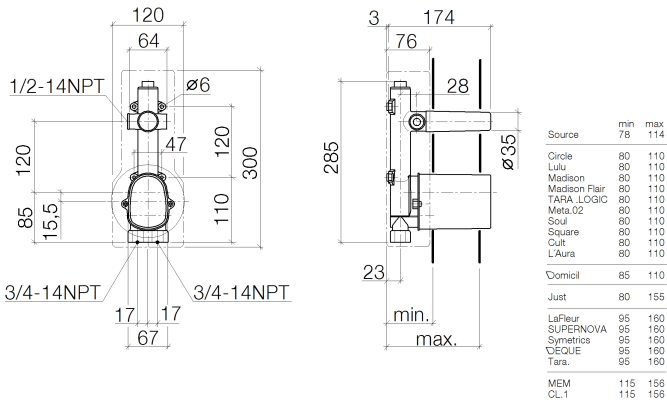


- red brass, lead-free
- 2x back flow preventer
- pre-seal
- 3/4" (cold/hot) connection
- 1x female thread 1/2" outlet, left/right/top alternatively
- thermostat cartridge
- head part with cut-to-length spindle and sleeve
- 2x dust cover
- 2x anti-water packing
- soundproofing
- gauge 120 mm

NOTE: Important for certain series!
 Due to minimum rough-in requirements, a framing of 2x6 studs is needed.

Recommended miscellaneous		Recommended miscellaneous	
	Extension 28 mm -	Extension 46 mm -	
	12 177 970 90		12 178 970 90

35 437 970 Product version up to 5/12/2021

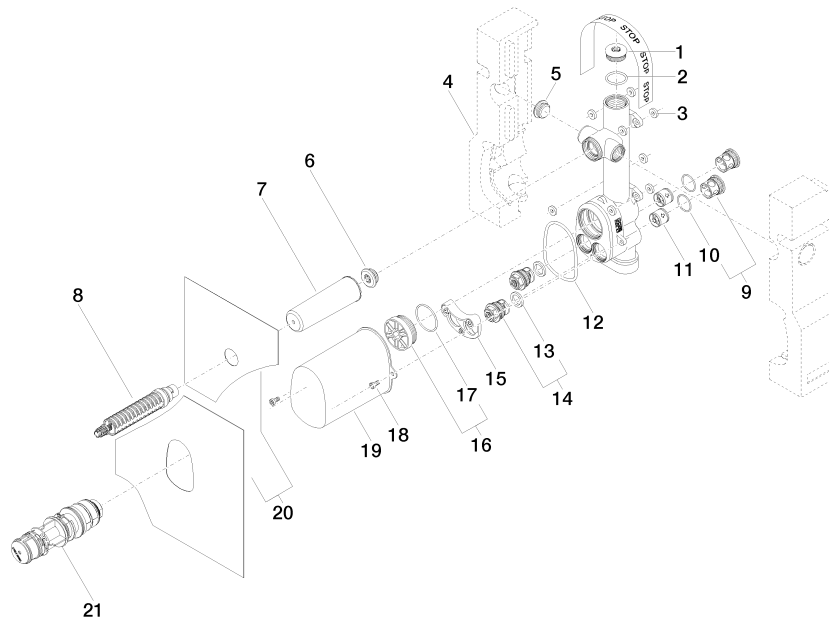


Codes & Standards

ASME A112.18.1 cUPC

Certificates and sustainability

IAPMO_4976 (



Spare parts list

No.	Item Number	Name	Quantity used	Delivery time
	2 09 14 10 009 90	seal	1.00	2
	19 09 21 02 103 90	cap	1.00	2
	16 04 31 20 100 00 90	plug	1.00	2
	3 04 14 05 045 00 90	set	8.00	2
	8 90 90 03 143 00 90	top	1.00	2
	12 09 14 10 189 90	seal	1.00	2
	14 90 29 05 031 00 90	insert	2.00	2
	17 09 14 10 111 90	seal	1.00	2
	4 09 11 11 021 90	accessories	1.00	2
	6 04 31 20 006 00 90	plug	1.00	2
	10 09 14 10 098 90	seal	2.00	2
	7 09 21 02 102 90	cap	1.00	2
	9 04 21 34 077 00 90	nipple	2.00	2
	5 04 31 20 062 10 90	plug	1.00	2
	21 90 15 02 065 00 90	cartridge	1.00	2
	15 90 12 12 218 00 90	base	1.00	2
	1 09 31 20 003 90	plug	1.00	2
	13 09 14 05 002 90	seal	2.00	2
	11 90 23 01 045 00 90	back-flow preventer	2.00	2
	18 90 30 30 027 00 90	screw	2.00	2
	20 04 14 03 073 05 90	gasket kit	1.00	2