

xTOOL Concealed thermostat module with 2 valves -

SERIES-VARIOUS

35 527 970

Product version up to 5/12/2021



- red brass, lead-free
- 2x back flow preventer
- 3/4" (cold/hot) connection
- female thread 1/2" connection
- thermostat cartridge
- 2x head part with cut-to-length spindle and sleeve
- 3x anti-water packing
- 3x dust cover
- soundproofing
- gauge 120 mm

Recommended miscellaneous

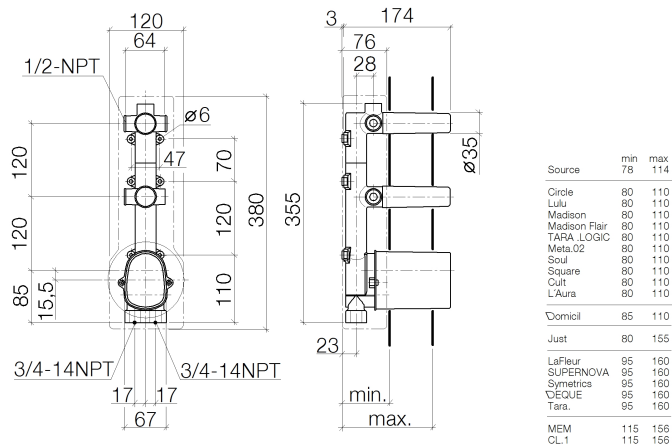
Extension 28 mm -	12 177 970 90

Recommended miscellaneous

Extension 46 mm -	12 178 970 90

35 527 970

Product version up to 5/12/2021

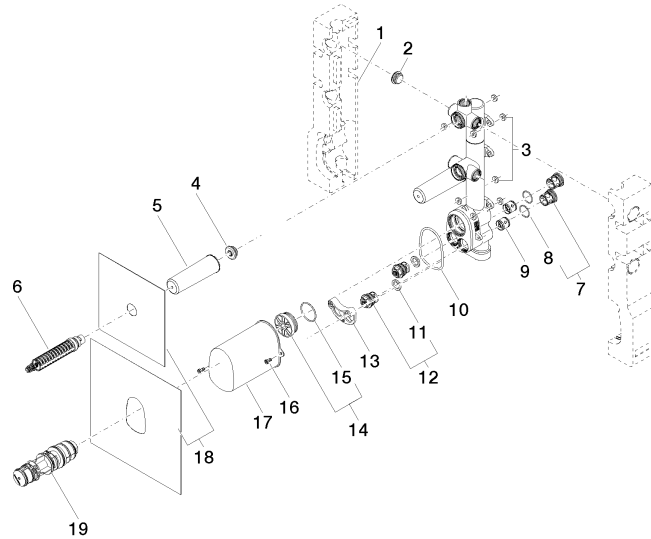


Codes & Standards

ASME A112.18.1cUPC

Certificates and sustainability

IAPMO_4976 (



Spare parts list

No.	Item Number	Name	Quantity used	Delivery time
	11 09 14 05 002 90	seal	2.00	2
	9 90 23 01 045 00 90	back-flow preventer	2.00	2
	2 04 31 20 062 10 90	plug	3.00	2
	5 09 21 02 102 90	cap	2.00	2
	1 09 11 11 014 90	accessories	1.00	2
	12 90 29 05 031 00 90	insert	2.00	2
	15 09 14 10 111 90	seal	1.00	2
	8 09 14 10 098 90	seal	2.00	2
	3 04 14 05 045 00 90	set	1.00	2
	7 04 21 34 077 00 90	nipple	2.00	2
	10 09 14 10 189 90	seal	1.00	2
	6 90 90 03 143 00 90	top	2.00	2
	4 04 31 20 006 00 90	plug	2.00	2
	13 90 12 12 218 00 90	base	1.00	2
	14 04 31 20 100 00 90	plug	1.00	2
	17 09 21 02 103 90	cap	1.00	2
	18 04 14 03 073 06 90	gasket kit	1.00	2
	16 90 30 30 027 00 90	screw	1.00	2
	19 90 15 02 065 00 90	cartridge	1.00	2