

Pressure balanced valve -

SERIES-VARIOUS

35 920 970 90 Product version from 5/1/2023



- integrated pre-seals
- red brass, lead-free
- 2x back flow preventer
- 3x outlet G 1/2"
- 2x inlet G 1/2"
- dust cover
- anti-water packing
- sound and thermal insulation
- suitable for xGRID (when using installation track + 12 mm recess depth)

Recommended miscellaneous

Extension 25 mm -

12 192 970 90



Recommended miscellaneous

Extension 25 mm -

12 193 970 90





Pressure balanced valve -

SERIES-VARIOUS

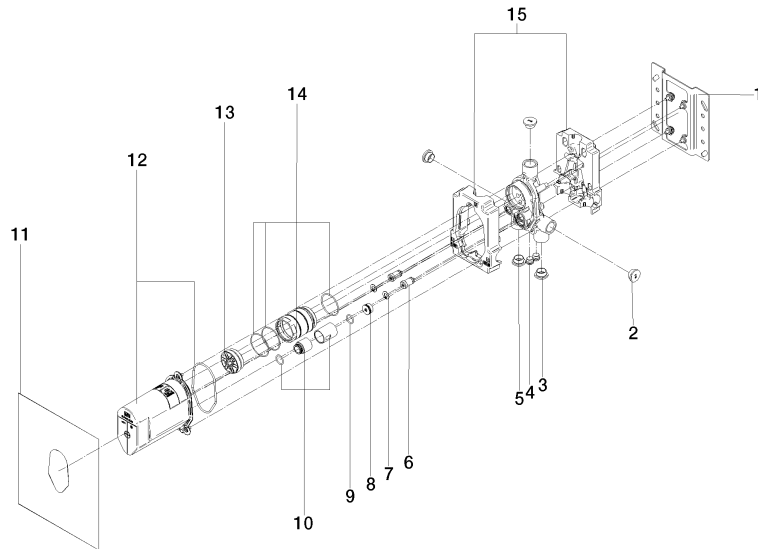
35 920 970 90 Product version from 5/1/2023

Codes & Standards

ASME A112.18.1 cUPC

Certificates and sustainability

IAPMO_4976 (



Spare parts list

No.	Item Number	Name	Quantity used	Delivery time
	13 04 31 20 100 00 90	plug	1.00	2
	14 90 17 01 357 00 90	sleeve	1.00	2
	5 09 31 20 093 90	plug	1.00	2
	1 04 17 20 128 00 90	holder	1.00	2
	9 90 14 10 055 00 90	seal	1.00	2
	7 09 16 01 014 90	ring	2.00	2
	11 04 14 03 155 00 90	gasket kit	1.00	2
	4 04 31 20 039 11 90	plug	2.00	2
	3 09 31 20 094 90	plug	1.00	2
	2 09 31 20 092 90	plug	3.00	2
	6 04 24 03 223 00 90	insert	2.00	2
	10 90 17 01 189 00 90	sleeve	1.00	2
	8 09 31 20 098 90	plug	1.00	2
	12 90 21 02 148 00 90	cap	1.00	2
	15 09 11 11 058 90	accessories	1.00	2