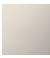




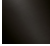


36 200 361



- rotary diverter
- rosette Ø 60 mm
- NEUTRAL porcelain insert
- with shut-off function

	Platinum	36 200 361-08 0010
	Chrome	36 200 361-00 0010
	Brushed Platinum	36 200 361-06 0010
	Durabross (23kt Gold)	36 200 361-09 0010
	Brushed Durabross (23kt Gold)	36 200 361-28 0010
	Brushed Dark Platinum	36 200 361-99 0010

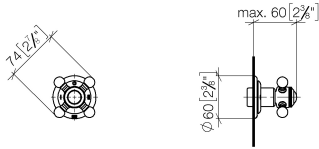
**Required miscellaneous**



- |                                     |               |
|-------------------------------------|---------------|
| <b>Concealed two-way diverter -</b> | 35 202 970-90 |
| •max. recess depth 155 mm           | 0010          |
| •min. recess depth 85 mm            |               |

36 200 361

mm [inches]



### Flow rate chart



### Codes & Standards

California Energy  
Commission  
(CEC)



## MADISON Concealed two-way diverter - Platinum

---

MADISON

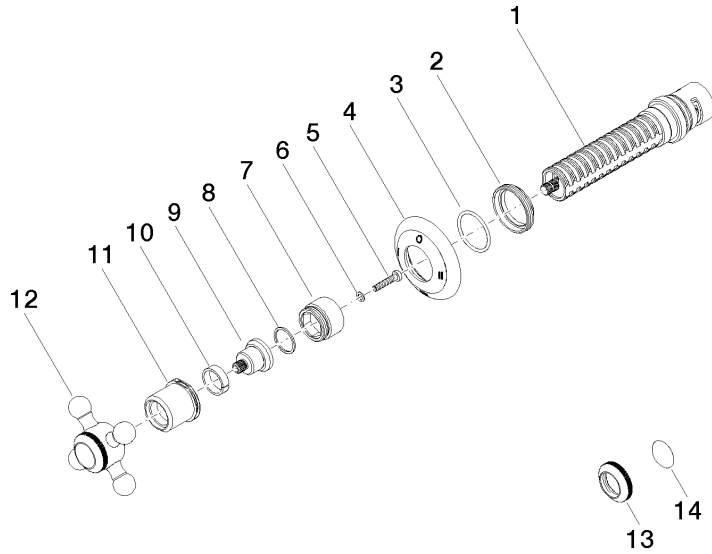
36 200 361

### Certificates

---

IAPMO\_4976 (7).

36 200 361



**Spare parts list**

No.	Item Number	Name	Quantity used	Delivery time
1	90 90 03 306 10 90	diverter	1	2
2	09 23 10 125-00	nut	1	10
3	90 14 10 063 00 90	seal	1	2
4	09 27 36 103-08	rosette	1	60
5	90 30 30 075 00 90	screw	1	2
6	09 30 11 194 90	disc	1	2
7	09 18 30 007-08	sleeve	1	60
8	90 28 10 030 00 90	ring	1	2
9	09 12 12 064-08	base	1	60
10	90 14 15 021 00 90	ring	1	2
11	09 21 02 161-08	cover	1	40
12	04 20 36 100 02-08	handle	1	40
13	09 20 36 005-08	handle	1	40
14	09 26 01 016 90	accessories	1	2