

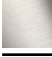


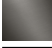


MADISON Concealed two-way diverter - Durabrand (23kt Gold)
MADISON

36 200 361
Product version from 4/1/2022



- rotary diverter
- rosette Ø 60 mm
- NEUTRAL porcelain insert
- with shut-off function

	Durabrand (23kt Gold)	36 200 361-09 0010
	Chrome	36 200 361-00 0010
	Brushed Platinum	36 200 361-06 0010
	Platinum	36 200 361-08 0010
	Brushed Durabrand (23kt Gold)	36 200 361-28 0010
	Brushed Dark Platinum	36 200 361-99 0010

Required miscellaneous

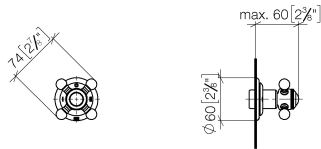


- Concealed two-way diverter -

35 202 970-90  
0010
- min. recess depth 85 mm
  - max. recess depth 155 mm

36 200 361 Product version from 4/1/2022

mm [inches]

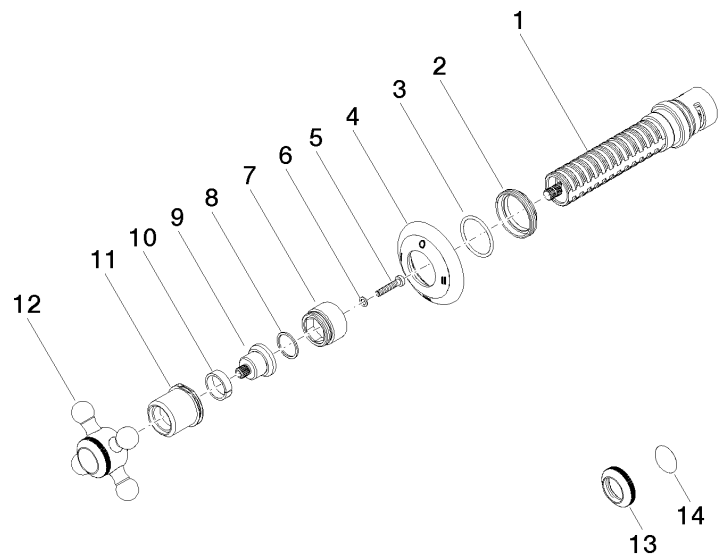


Codes & Standards

ADA	ASME A112.18.1	California Energy Commission (CEC)	cUPC
-----	----------------	------------------------------------	------

Certificates and sustainability

IAPMO\_4976 (



### Spare parts list

No.	Item Number	Name	Quantity used	Delivery time
12	04 20 36 100 02-09	handle	1.00	40
2	09 23 10 125-00	nut	1.00	10
1	90 90 03 306 10 90	diverter	1.00	2
14	09 26 01 016 90	accessories	1.00	2
9	09 12 12 064-09	base	1.00	60
6	09 30 11 194 90	disc	1.00	2
11	09 21 02 161-09	cover	1.00	40
13	09 20 36 005-09	handle	1.00	40
7	09 18 30 007-09	sleeve	1.00	60
4	09 27 36 103-09	rosette	1.00	60
10	90 14 15 021 00 90	ring	1.00	2
5	90 30 30 075 00 90	screw	1.00	2
8	90 28 10 030 00 90	ring	1.00	2
3	90 14 10 063 00 90	seal	1.00	2