

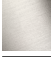
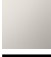


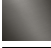


MADISON Concealed two-way diverter - Brushed Durabrass (23kt Gold)
MADISON


36 200 361
Product version from 4/1/2022



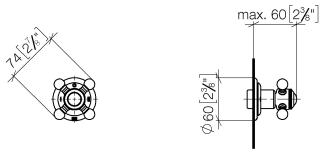
- rotary diverter
- rosette Ø 60 mm
- NEUTRAL porcelain insert
- with shut-off function

	Brushed Durabrass (23kt Gold)	36 200 361-28 0010
	Chrome	36 200 361-00 0010
	Brushed Platinum	36 200 361-06 0010
	Platinum	36 200 361-08 0010
	Durabrass (23kt Gold)	36 200 361-09 0010
	Brushed Dark Brass	36 200 361-39 0010
	Brushed Dark Platinum	36 200 361-99 0010

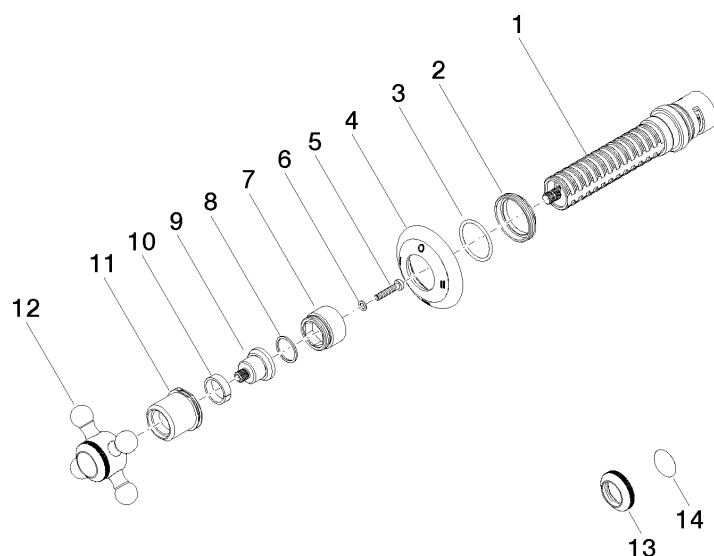
Required miscellaneous

	Concealed two-way diverter - •min. recess depth 85 mm •max. recess depth 155 mm	35 202 970-90 0010
---	--	-----------------------

mm [inches]



Codes & Standards	
ADA	California Energy Commission (CEC)



Spare parts list

No.	Item Number	Name	Quantity used	Delivery time
4	09 27 36 103-28	rosette	1.00	60
14	09 26 01 016 90	accessories	1.00	2
6	09 30 11 194 90	disc	1.00	2
2	09 23 10 125-00	nut	1.00	10
1	90 90 03 306 10 90	diverter	1.00	2
7	09 18 30 007-28	sleeve	1.00	-
Spare part can no longer be ordered, please order the replacement item				
12	04 20 36 100 02-28	handle	1.00	20
13	09 20 36 005-28	handle	1.00	20
9	09 12 12 064-28	base	1.00	-
Spare part can no longer be ordered, please order the replacement item				
11	09 21 02 161-28	cover	1.00	20
5	90 30 30 075 00 90	screw	1.00	2
3	90 14 10 063 00 90	seal	1.00	2
10	90 14 15 021 00 90	ring	1.00	2
8	90 28 10 030 00 90	ring	1.00	2