

META Concealed two-way diverter - Matte Black

META

36 200 661

Product version from 4/1/2022



- rotary diverter
- handle Ø 60mm
- with shut-off function

| | | |
|---|-------------------------------|--------------------|
|  | Matte Black | 36 200 661-33 0010 |
|  | Chrome | 36 200 661-00 0010 |
|  | Brushed Platinum | 36 200 661-06 0010 |
|  | Light Gold | 36 200 661-26 0010 |
|  | Brushed Light Gold | 36 200 661-27 0010 |
|  | Brushed Dark Brass | 36 200 661-39 0010 |
|  | Brushed Bronze | 36 200 661-42 0010 |
|  | Brushed Champagne (22kt Gold) | 36 200 661-46 0010 |
|  | Champagne (22kt Gold) | 36 200 661-47 0010 |
|  | Brushed Chrome | 36 200 661-93 0010 |
|  | Brushed Dark Platinum | 36 200 661-99 0010 |

Required miscellaneous



- Concealed two-way diverter -

•max. recess depth 160 mm

•min. recess depth 115 mm

35 202 970-90

0010

mm [inches]



Codes & Standards

ADA

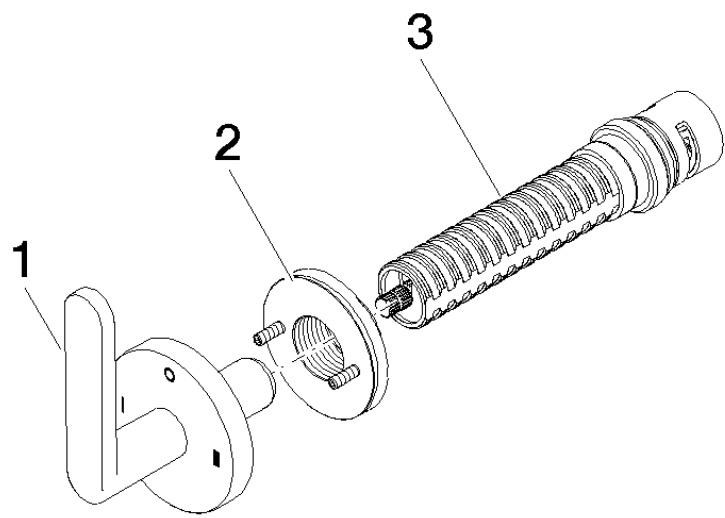
ASME A112.18.1

California Energy
Commission
(CEC)

cUPC

Certificates and sustainability

IAPMO_4976 (



Spare parts list

| No. | Item Number | Name | Quantity used | Delivery time |
|-----|--------------------|----------|---------------|---------------|
| 2 | 90 21 02 181 00 90 | disc | 1.00 | 2 |
| 3 | 90 90 03 306 10 90 | diverter | 1.00 | 2 |
| 1 | 90 20 66 014 01-33 | handle | 1.00 | 30 |