

Concealed two-way diverter - Brushed Dark Brass

SERIES SPECIFIC

36 200 740
Product version from 4/1/2022

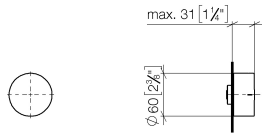


- rotary diverter
- without rosette
- handle Ø 60mm
- with shut-off function

| | | |
|---|-------------------------------|--------------------|
|  | Brushed Dark Brass | 36 200 740-39 0010 |
|  | Chrome | 36 200 740-00 0010 |
|  | Brushed Platinum | 36 200 740-06 0010 |
|  | Dark Chrome | 36 200 740-19 0010 |
|  | Light Gold | 36 200 740-26 0010 |
|  | Brushed Light Gold | 36 200 740-27 0010 |
|  | Brushed Durabrass (23kt Gold) | 36 200 740-28 0010 |
|  | Matte Black | 36 200 740-33 0010 |
|  | Brushed Bronze | 36 200 740-42 0010 |
|  | Brushed Champagne (22kt Gold) | 36 200 740-46 0010 |
|  | Champagne (22kt Gold) | 36 200 740-47 0010 |
|  | Brushed Dark Platinum | 36 200 740-99 0010 |

36 200 740 Product version from 4/1/2022

mm [inches]



Codes & Standards

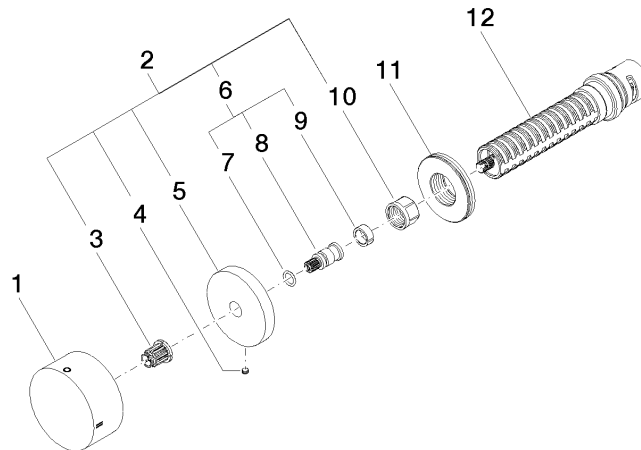
California Energy
Commission
(CEC)

Concealed two-way diverter - Brushed Dark Brass

SERIES SPECIFIC

36 200 740 Product version from 4/1/2022

Parts for other
finishes can be found
here: [Chrome](#)



Spare parts list

| No. | Item Number | Name | Quantity used | Delivery time |
|--|-----------------------|------------|---------------|---------------|
| | 7 90 14 10 060 00 90 | seal | 1.00 | 2 |
| | 12 90 90 03 306 10 90 | diverter | 1.00 | 2 |
| | 11 09 30 01 107 90 | sleeve | 1.00 | 2 |
| | 2 04 27 74 004 00-39 | rosette | 1.00 | 60 |
| | 3 90 12 12 002 00 90 | fixing cap | 1.00 | 2 |
| | 8 09 29 06 020-39 | spindle | 1.00 | - |
| Spare part can no longer be ordered, please order the replacement item | | | | |
| | 5 09 27 74 004-39 | rosette | 1.00 | 60 |
| | 10 90 23 30 023 00 90 | nut | 1.00 | 2 |
| | 6 04 29 06 020 00-39 | spindle | 1.00 | - |
| Spare part can no longer be ordered, please order the replacement item | | | | |
| | 1 09 20 74 042-39 | handle | 1.00 | 60 |
| | 9 90 14 15 020 03 90 | ring | 1.00 | 2 |
| | 4 09 31 11 055 90 | pin | 1.00 | 2 |