








VAIA Concealed two-way diverter - Brushed Dark Brass
VAIA

36 200 819
Product version from 4/1/2022

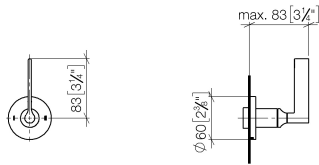


- rotary diverter
- rosette Ø 60 mm
- with shut-off function

	Brushed Dark Brass	36 200 819-39 0010
	Chrome	36 200 819-00 0010
	Brushed Platinum	36 200 819-06 0010
	Dark Chrome	36 200 819-19 0010
	Brushed Durabrass (23kt Gold)	36 200 819-28 0010
	Brushed Bronze	36 200 819-42 0010
	Brushed Dark Platinum	36 200 819-99 0010

36 200 819 Product version from 4/1/2022

mm [inches]



#### Codes & Standards

ADA

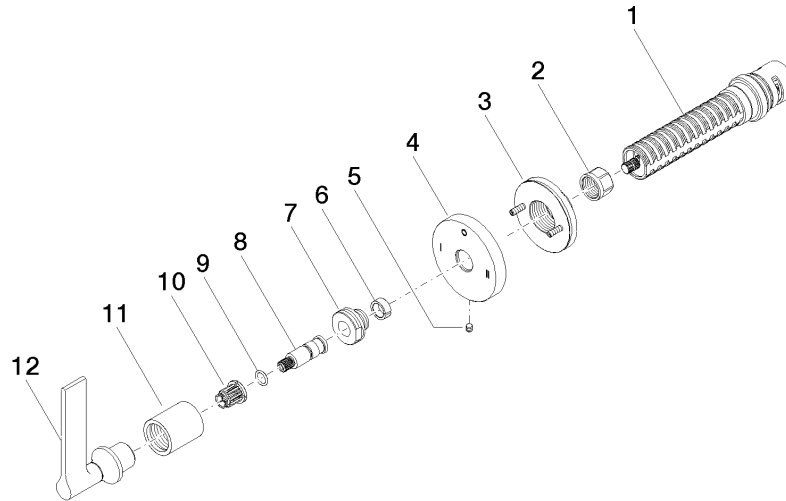
California Energy  
Commission  
(CEC)

## VAIA Concealed two-way diverter - Brushed Dark Brass

VAIA

36 200 819 Product version from 4/1/2022

Parts for other  
finishes can be found  
here: [Chrome](#)



### Spare parts list

No.	Item Number	Name	Quantity used	Delivery time
	9 90 14 10 060 00 90	seal	1.00	2
	10 90 12 12 002 00 90	fixing cap	1.00	2
	8 09 29 06 022 90	spindle	1.00	2
	1 90 90 03 306 10 90	diverter	1.00	2
	7 09 24 05 002 90	nipple	1.00	2
	5 09 31 11 294 90	pin	1.00	2
	2 90 23 30 023 00 90	nut	1.00	2
	4 09 27 89 120-39	rosette	1.00	60
	3 90 21 02 181 00 90	disc	1.00	2
	11 09 21 02 070-39	cover	1.00	60
	6 90 14 15 020 03 90	ring	1.00	2
	12 90 20 80 015 01-39	handle	1.00	30