

TARA Concealed two-way diverter - Dark Chrome

TARA

36 200 882 Product version from 4/1/2022



- rotary diverter
- rosette 60 mm
- with shut-off function

| | | |
|---|--------------------------------|--------------------|
|  | Dark Chrome | 36 200 882-19 0010 |
|  | Chrome | 36 200 882-00 0010 |
|  | Brushed Platinum | 36 200 882-06 0010 |
|  | Platinum | 36 200 882-08 0010 |
|  | Brushed Durabronze (23kt Gold) | 36 200 882-28 0010 |
|  | Matte Black | 36 200 882-33 0010 |
|  | Brushed Dark Brass | 36 200 882-39 0010 |
|  | Brushed Bronze | 36 200 882-42 0010 |
|  | Brushed Champagne (22kt Gold) | 36 200 882-46 0010 |
|  | Champagne (22kt Gold) | 36 200 882-47 0010 |
|  | Brushed Chrome | 36 200 882-93 0010 |
|  | Brushed Dark Platinum | 36 200 882-99 0010 |

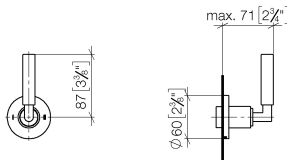
Required miscellaneous



- Concealed two-way diverter -** 35 202 970-90
 •min. recess depth 85 mm 0010
 •max. recess depth 160 mm

36 200 882 Product version from 4/1/2022

mm [inches]



Codes & Standards

ADA

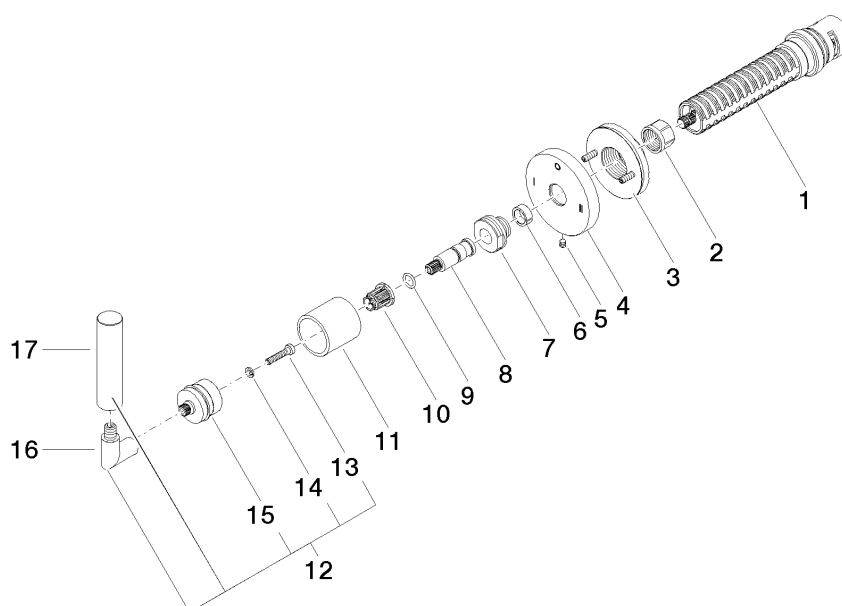
ASME A112.18.1

California Energy
Commission
(CEC)

cUPC

Certificates and sustainability

IAPMO_4976 (



Spare parts list

| No. | Item Number | Name | Quantity used | Delivery time |
|-----|-----------------------|------------|---------------|---------------|
| | 11 09 21 02 144-19 | sleeve | 1.00 | 20 |
| | 7 09 24 05 002 90 | nipple | 1.00 | 2 |
| | 10 90 12 12 002 00 90 | fixing cap | 1.00 | 2 |
| | 4 09 27 89 120-19 | rosette | 1.00 | 60 |
| | 1 90 90 03 306 10 90 | diverter | 1.00 | 2 |
| | 12 04 20 88 052 10-19 | handle | 1.00 | 60 |
| | 3 90 21 02 181 00 90 | disc | 1.00 | 2 |
| | 5 09 31 11 294 90 | pin | 1.00 | 2 |
| | 14 90 30 11 029 00 90 | disc | 1.00 | 2 |
| | 17 09 20 88 052-19 | handle | 1.00 | 20 |
| | 13 90 30 30 075 00 90 | screw | 1.00 | 2 |
| | 2 90 23 30 023 00 90 | nut | 1.00 | 2 |
| | 16 04 18 20 022 00-19 | angle | 1.00 | 60 |
| | 8 09 29 06 022 90 | spindle | 1.00 | 2 |
| | 6 90 14 15 020 03 90 | ring | 1.00 | 2 |
| | 15 90 12 12 219 00-19 | base | 1.00 | 20 |
| | 9 90 14 10 060 00 90 | seal | 1.00 | 2 |