


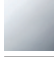

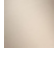


CL.1 Concealed two-way diverter - Dark Chrome

CL.1

36 201 705

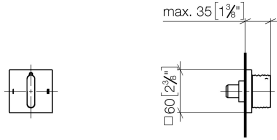


- with WAVES structure
- rotary diverter
- rosette 60 x 60 mm
- with shut-off function

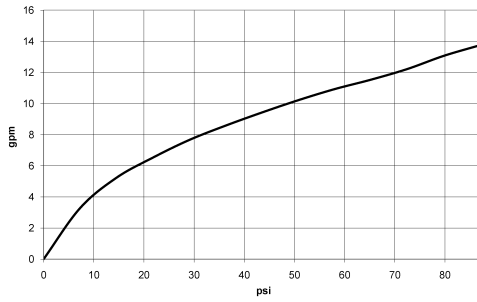
	Dark Chrome	36 201 705-19 0010
	Chrome	36 201 705-00 0010
	Brushed Platinum	36 201 705-06 0010
	Brushed Champagne (22kt Gold)	36 201 705-46 0010
	Champagne (22kt Gold)	36 201 705-47 0010
	Brushed Dark Platinum	36 201 705-99 0010

36 201 705

mm [inches]



Flow rate chart

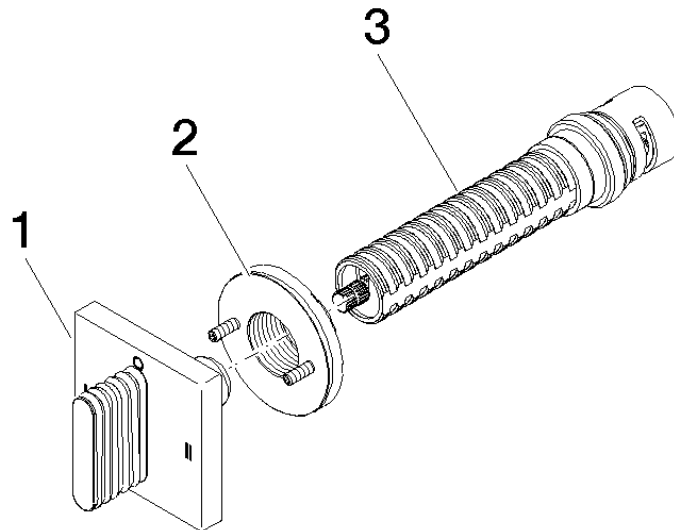


Codes & Standards

California Energy
Commission
(CEC)

36 201 705

Parts for other finishes can be found here: [Chrome](#)



Spare parts list

No.	Item Number	Name	Quantity used	Delivery time
1	90 20 70 055 09-19	handle	1	20
2	90 21 02 181 00 90	disc	1	2
3	90 90 03 306 10 90	diverter	1	2