









Concealed three-way diverter - Brushed Light Gold

SERIES SPECIFIC

36 210 740 Product version from 4/1/2022

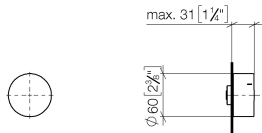


- rotary diverter
- without rosette
- handle Ø 60mm
- with shut-off function

	Brushed Light Gold	36 210 740-27 0010
	Chrome	36 210 740-00 0010
	Brushed Platinum	36 210 740-06 0010
	Dark Chrome	36 210 740-19 0010
	Light Gold	36 210 740-26 0010
	Brushed Durabronze (23kt Gold)	36 210 740-28 0010
	Matte Black	36 210 740-33 0010
	Brushed Dark Brass	36 210 740-39 0010
	Brushed Bronze	36 210 740-42 0010
	Brushed Champagne (22kt Gold)	36 210 740-46 0010
	Champagne (22kt Gold)	36 210 740-47 0010
	Brushed Dark Platinum	36 210 740-99 0010

36 210 740 Product version from 4/1/2022

mm [inches]



Codes & Standards

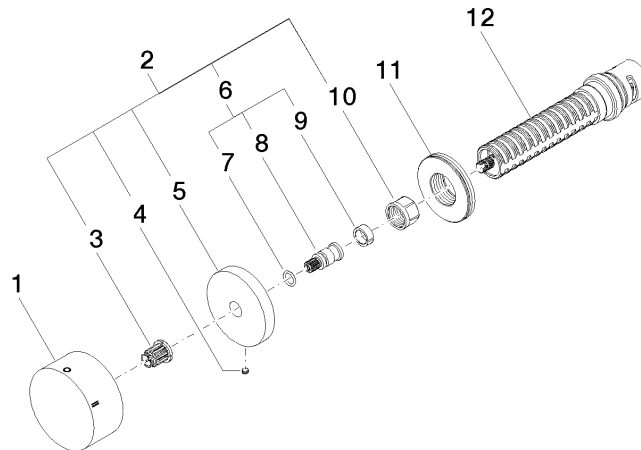
California Energy
Commission
(CEC)

Concealed three-way diverter - Brushed Light Gold

SERIES SPECIFIC

36 210 740 Product version from 4/1/2022

Parts for other
finishes can be found
here: [Chrome](#)



Spare parts list

No.	Item Number	Name	Quantity used	Delivery time
9	90 14 15 020 03 90	ring	1.00	2
1	09 20 74 043-27	handle	1.00	60
3	90 12 12 002 00 90	fixing cap	1.00	2
8	09 29 06 020-27	spindle	1.00	-
Spare part can no longer be ordered, please order the replacement item				
5	09 27 74 004-27	rosette	1.00	60
10	90 23 30 023 00 90	nut	1.00	2
2	04 27 74 004 00-27	rosette	1.00	60
11	09 30 01 107 90	sleeve	1.00	2
6	04 29 06 020 00-00	spindle	1.00	10
4	09 31 11 055 90	pin	1.00	2
12	90 90 03 305 10 90	diverter	1.00	2
7	90 14 10 060 00 90	seal	1.00	2