

Concealed thermostat with one function volume control - Brushed Light Gold

IMO

36 425 670



Fits: IMO, MEM, CL.1, CYO

- cover plate 150 x 90 mm
- temperature control handle with safety limit stop at 38°C
- hot water temperature limiter, can be preset

	Brushed Light Gold	36 425 670-27 0010
	Chrome	36 425 670-00 0010
	Brushed Platinum	36 425 670-06 0010
	Platinum	36 425 670-08 0010
	Dark Chrome	36 425 670-19 0010
	Brushed Durabronze (23kt Gold)	36 425 670-28 0010
	Matte Black	36 425 670-33 0010
	Brushed Champagne (22kt Gold)	36 425 670-46 0010
	Champagne (22kt Gold)	36 425 670-47 0010
	Brushed Chrome	36 425 670-93 0010
	Brushed Dark Platinum	36 425 670-99 0010

Required miscellaneous



Concealed thermostat for one- and two-way outlets - 35 426 970-90 0010
 •min. recess depth 80 mm
 •max. recess depth 136 mm

Recommended miscellaneous



xGRID Attachment set for integrating in the dry wall construction - 12 340 970 90

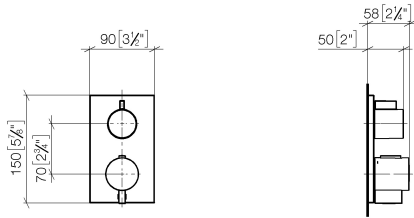
Required miscellaneous



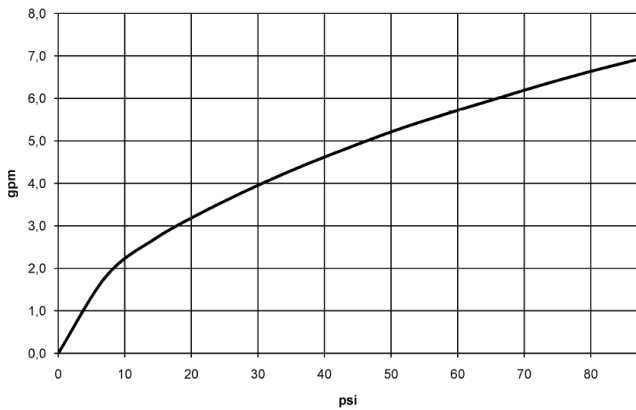
xGRID Installation track 555 mm - 12 360 970 90

36 425 670

mm [inches]



Flow rate chart

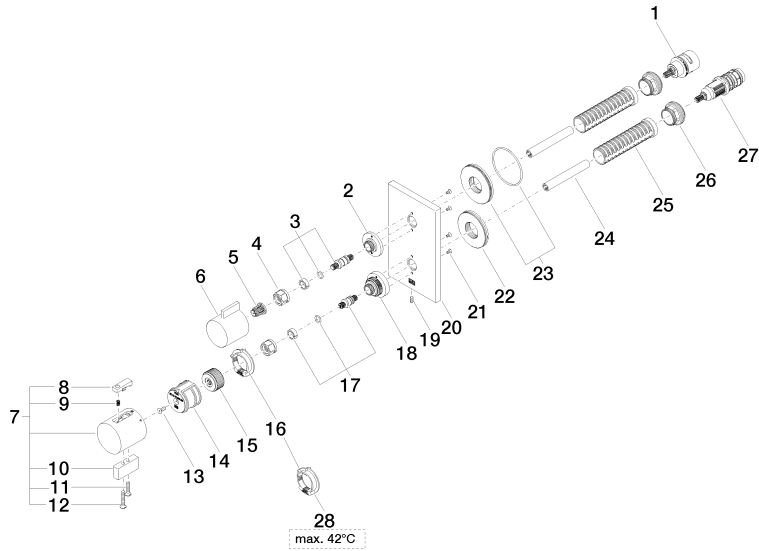


Codes & Standards

ADA ASME
A112.18.1/CSA
B125.1

36 425 670

Product version from 6/30/2022





Concealed thermostat with one function volume control - Brushed Light Gold

IMO

36 425 670

Spare parts list

Product version from 6/30/2022