

Concealed thermostat with one function volume control - Brushed Champagne (22kt Gold)

SERIES SPECIFIC

36 425 670


Product version from 6/30/2022




- cover plate 150 x 90 mm
- temperature control handle with safety limit stop at 38°C
- hot water temperature limiter, can be preset

	Brushed Champagne (22kt Gold)	36 425 670-46 0010
	Chrome	36 425 670-00 0010
	Brushed Platinum	36 425 670-06 0010
	Platinum	36 425 670-08 0010
	Dark Chrome	36 425 670-19 0010
	Brushed Light Gold	36 425 670-27 0010
	Brushed Durabrass (23kt Gold)	36 425 670-28 0010
	Matte Black	36 425 670-33 0010
	Champagne (22kt Gold)	36 425 670-47 0010
	Brushed Chrome	36 425 670-93 0010
	Brushed Dark Platinum	36 425 670-99 0010

Required miscellaneous

	<b>Concealed thermostat for one- and two-way outlets -</b> •max. recess depth 136 mm •min. recess depth 80 mm	35 426 970-90 0010
---	---	--------------------

Recommended miscellaneous

	<b>xGRID Attachment set for integrating in the dry wall construction -</b>	12 340 970 90
---	--	---------------

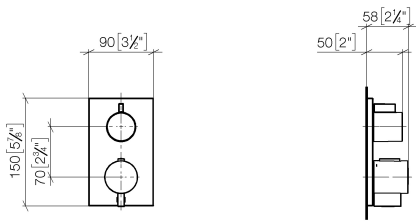
Required miscellaneous

	<b>xGRID Installation track 555 mm -</b>	12 360 970 90
---	--	---------------

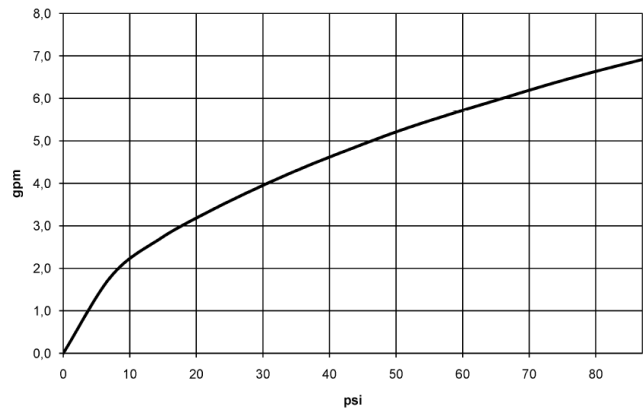


Concealed thermostat with one function volume control - Brushed Champagne (22kt Gold) SERIES SPECIFIC

36 425 670    Product version from 6/30/2022  
mm [inches]



Flow rate chart



Codes & Standards

ADA                                      ASME A112.18.1                                      cUPC



## Concealed thermostat with one function volume control - Brushed Champagne (22kt Gold) SERIES SPECIFIC

---

36 425 670 Product version from 6/30/2022

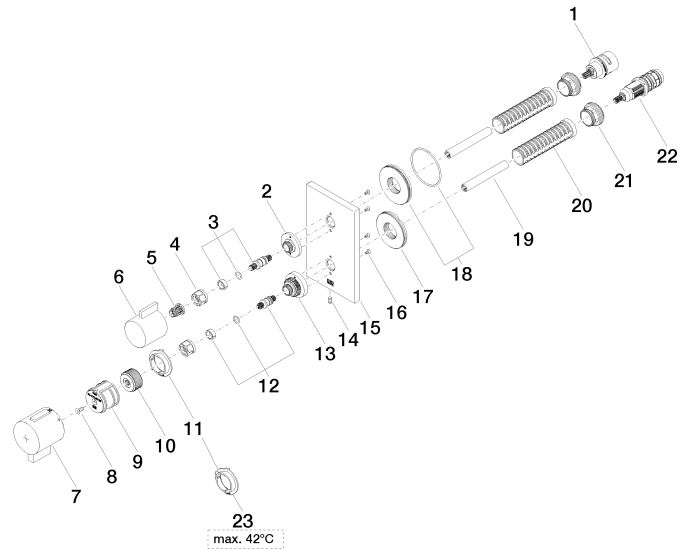
Certificates and sustainability

---

IAPMO\_4976 (

# Concealed thermostat with one function volume control - Brushed Champagne (22kt Gold) SERIES SPECIFIC

36 425 670 Product version from 6/30/2022





## Concealed thermostat with one function volume control - Brushed Champagne (22kt Gold) SERIES SPECIFIC

36 425 670 Product version from 6/30/2022

### Spare parts list

No.	Item Number	Name	Quantity used	Delivery time
14	09 31 11 134 90	pin	1.00	2
6	09 20 67 006-46	handle	1.00	30
2	09 12 12 053-46	base	1.00	60
7	90 17 33 019 00-46	handle	1.00	30
21	09 24 04 257 90	nut	1.00	2
10	09 12 12 054 90	base	1.00	2
23	09 28 10 189 90	regulator	1.00	2
16	09 30 30 157 90	screw	4.00	2
5	90 12 12 002 00 90	fixing cap	1.00	2
15	09 11 02 234-46	plate	1.00	30
17	09 30 01 296 90	disc	1.00	2
1	90 90 03 166 00 90	top	1.00	2
18	90 30 01 190 00 90	disc	1.00	2
13	09 12 12 051-46	base	1.00	60
22	90 15 02 013 00 90	cartridge	1.00	2
11	09 28 10 190 90	regulator	1.00	2
20	90 18 40 077 01 90	spindle	1.00	2
4	90 23 30 023 00 90	nut	2.00	2
9	90 12 12 052 00 90	base	1.00	2
19	90 23 01 124 00 90	sleeve	1.00	2
8	90 30 30 124 00 90	screw	1.00	2
3	04 29 06 111 01-00	spindle	1.00	10
12	04 29 06 024 01-00	spindle	1.00	10