









LISSÉ Concealed thermostat with one function volume control - Brushed Chrome

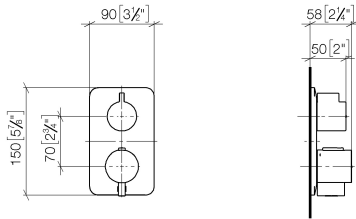
LISSÉ

<div> <div>36 425 845</div> <div>Product version from 3/9/2016 to 8/24/2020</div> </div> 	<ul style="list-style-type: none"> cover plate 150 x 90 mm temperature control handle with safety limit stop at 38°C hot water temperature limiter, can be preset 	
		Brushed Chrome 36 425 845-93 0010
		Chrome 36 425 845-00 0010
		Brushed Platinum 36 425 845-06 0010
		Dark Chrome 36 425 845-19 0010
		Brushed Light Gold 36 425 845-27 0010
		Matte Black 36 425 845-33 0010
		Brushed Dark Platinum 36 425 845-99 0010

LISSE Concealed thermostat with one function volume control - Brushed Chrome

LISSE

36 425 845 Product version from 3/9/2016 to 8/24/2020
mm [inches]



Codes & Standards

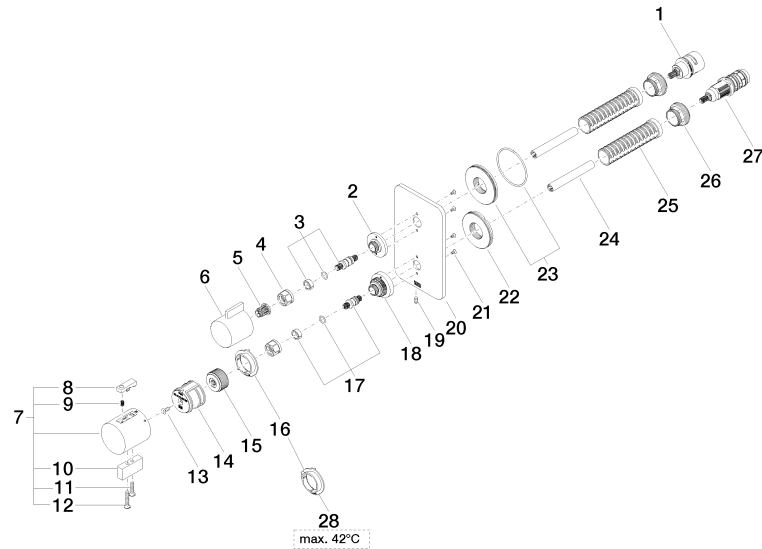
ADA

LISSÉ Concealed thermostat with one function volume control - Brushed Chrome

LISSÉ

36 425 845 Product version from 3/9/2016 to 8/24/2020

Parts for other
finishes can be found
here: [Chrome](#)





LISSÉ Concealed thermostat with one function volume control - Brushed Chrome

LISSÉ

36 425 845 Product version from 3/9/2016 to 8/24/2020

Spare parts list

No.	Item Number	Name	Quantity used	Delivery time
21	09 30 30 157 90	screw	4.00	2
20	09 11 02 302-93	plate	1.00	20
28	09 28 10 189 90	regulator	1.00	2
19	09 31 11 134 90	pin	1.00	2
10	09 20 33 006-93	handle	1.00	20
16	09 28 10 190 90	regulator	1.00	2
27	90 15 02 013 00 90	cartridge	1.00	2
7	04 17 33 006 00-93	handle	1.00	60
9	90 16 02 027 00 90	spring	1.00	2
1	90 90 03 166 00 90	top	1.00	2
18	09 12 12 051-93	base	1.00	20
2	09 12 12 053-93	base	1.00	20
12	09 30 30 160-93	screw	1.00	20
22	09 30 01 296 90	disc	1.00	2
26	09 24 04 257 90	nut	2.00	2
15	09 12 12 054 90	base	1.00	2
6	09 20 67 006-93	handle	1.00	20
11	09 30 30 159-93	screw	1.00	20
23	90 30 01 190 00 90	disc	1.00	2
5	90 12 12 002 00 90	fixing cap	1.00	2
3	04 29 06 111 01-00	spindle	1.00	10
4	90 23 30 023 00 90	nut	2.00	2
14	90 12 12 052 00 90	base	1.00	2
13	90 30 30 124 00 90	screw	1.00	2
24	90 23 01 124 00 90	sleeve	2.00	2
25	90 18 40 077 01 90	spindle	2.00	2
17	04 29 06 024 01-00	spindle	1.00	10
8	90 21 33 011 00-13	handle	1.00	2