


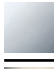




**MADISON Concealed thermostat with one function volume control - Brushed Durabrace (23kt Gold)**

MADISON

36 425 977



- cover plate Ø 175 mm
- temperature control handle with safety limit stop at 38°C
- hot water temperature limiter, can be preset

|   |                               |                    |
|---|-------------------------------|--------------------|
|  | Brushed Durabrace (23kt Gold) | 36 425 977-28 0010 |
|  | Chrome                        | 36 425 977-00 0010 |
|  | Brushed Platinum              | 36 425 977-06 0010 |
|  | Platinum                      | 36 425 977-08 0010 |
|  | Durabrace (23kt Gold)         | 36 425 977-09 0010 |
|  | Brushed Dark Platinum         | 36 425 977-99 0010 |

**Required miscellaneous**



**Concealed thermostat for one- and two-way outlets -** 35 426 970-90 0010  
 • max. recess depth 136 mm  
 • min. recess depth 80 mm

**Recommended miscellaneous**



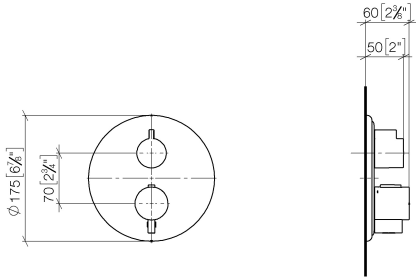
**xGRID Attachment set for integrating in the dry wall construction -** 12 340 970 90

**Required miscellaneous**

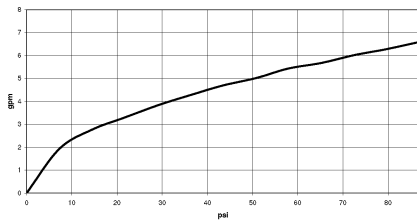


**xGRID Installation track 555 mm -** 12 360 970 90

36 425 977  
mm [inches]



**Flow rate chart**

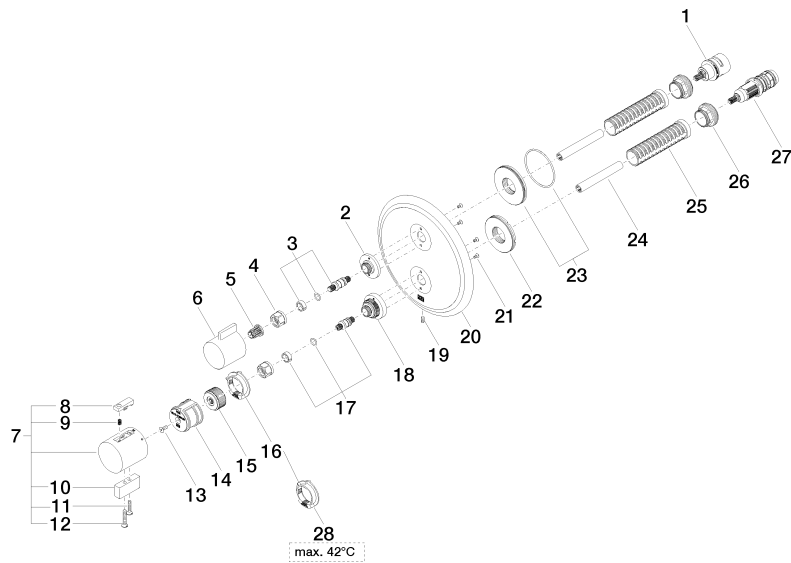


**Codes & Standards**

ADA

ASME  
A112.18.1/CSA  
B125.1

36 425 977





MADISON Concealed thermostat with one function volume control - Brushed  
Durabronz (23kt Gold)

MADISON

36 425 977

Spare parts list

| No. | Item Number        | Name       | Quantity used | Delivery time |
|-----|--------------------|------------|---------------|---------------|
| 1   | 90 90 03 166 00 90 | top        | 1             | 2             |
| 2   | 09 12 12 053-28    | base       | 1             | 20            |
| 3   | 04 29 06 111 01-00 | spindle    | 1             | 10            |
| 4   | 90 23 30 023 00 90 | nut        | 2             | 2             |
| 5   | 90 12 12 002 00 90 | fixing cap | 1             | 2             |
| 6   | 09 20 67 006-28    | handle     | 1             | 20            |
| 7   | 04 17 33 006 00-28 | handle     | 1             | 60            |
| 8   | 90 21 33 011 00-13 | handle     | 1             | 2             |
| 9   | 90 16 02 027 00 90 | spring     | 1             | 2             |
| 10  | 09 20 33 006-28    | handle     | 1             | 20            |
| 11  | 09 30 30 159-28    | screw      | 1             | 20            |
| 12  | 09 30 30 160-28    | screw      | 1             | 20            |
| 13  | 90 30 30 124 00 90 | screw      | 1             | 2             |
| 14  | 90 12 12 052 00 90 | base       | 1             | 2             |
| 15  | 09 12 12 054 90    | base       | 1             | 2             |
| 16  | 09 28 10 152 90    | regulator  | 1             | 60            |
| 17  | 04 29 06 024 01-00 | spindle    | 1             | 10            |
| 18  | 09 12 12 051-28    | base       | 1             | 20            |
| 19  | 09 31 11 134 90    | pin        | 1             | 2             |
| 20  | 09 11 02 307-28    | plate      | 1             | 20            |
| 21  | 09 30 30 157 90    | screw      | 4             | 2             |
| 22  | 09 30 01 296 90    | disc       | 1             | 2             |
| 23  | 90 30 01 190 00 90 | disc       | 1             | 2             |
| 24  | 90 23 01 124 00 90 | sleeve     | 2             | 2             |
| 25  | 90 18 40 077 01 90 | spindle    | 2             | 2             |
| 26  | 09 24 04 257 90    | nut        | 2             | 2             |
| 27  | 90 15 02 012 00 90 | cartridge  | 1             | 60            |
| 28  | 09 28 10 151 90    | regulator  | 1             | 60            |