

LULU Concealed thermostat with two function volume control - Chrome


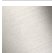
LULU

36 426 710


Product version up to 8/24/2020




- rotary diverter with volume control and shut-off function
- cover plate 150 x 90 mm
- temperature control handle with safety limit stop at 38°C
- hot water temperature limiter, can be preset
- single flow function only

	Chrome	36 426 710-00 0010
	Brushed Platinum	36 426 710-06 0010


Required miscellaneous

	<b>Concealed thermostat for one- and two-way outlets -</b> •max. recess depth 136 mm •min. recess depth 80 mm	35 426 970-90 0010
---	---	--------------------

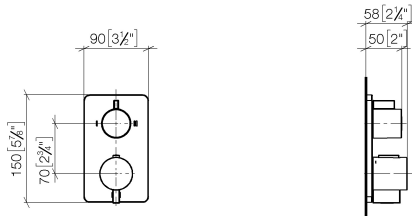
Required miscellaneous

	<b>xGRID Installation track 555 mm -</b>	12 360 970 90
--	--	---------------

Recommended miscellaneous

	<b>xGRID Attachment set for integrating in the dry wall construction -</b>	12 340 970 90
---	--	---------------

mm [inches]

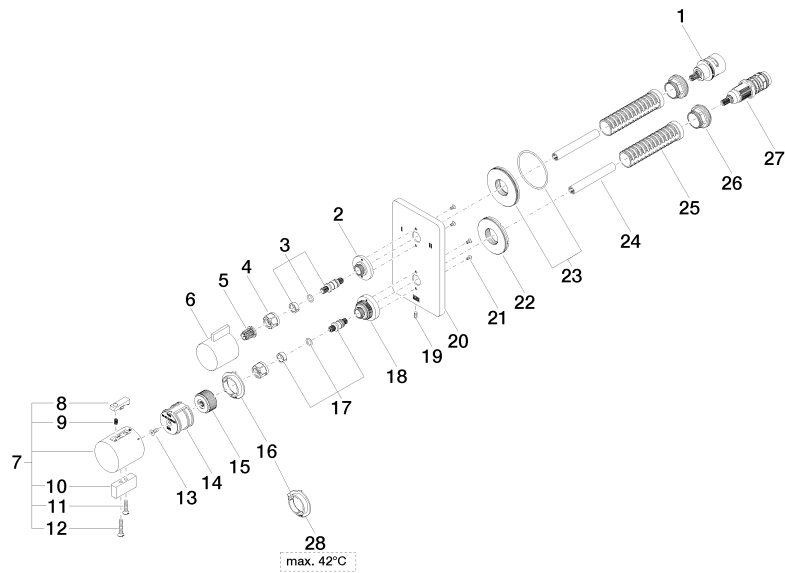


Codes & Standards

ADA	ASME A112.18.1	California Energy Commission (CEC)	cUPC
-----	----------------	--	------

Certificates and sustainability

IAPMO\_4976 (





## LULU Concealed thermostat with two function volume control - Chrome

LULU

36 426 710 Product version up to 8/24/2020

### Spare parts list

No.	Item Number	Name	Quantity used	Delivery time
26	09 24 04 257 90	nut	2.00	2
28	09 28 10 189 90	regulator	1.00	2
12	09 30 30 160-00	screw	1.00	10
9	90 16 02 027 00 90	spring	1.00	2
20	09 11 02 264-00	plate	1.00	10
23	90 30 01 190 00 90	disc	1.00	2
5	90 12 12 002 00 90	fixing cap	1.00	2
16	09 28 10 190 90	regulator	1.00	2
15	09 12 12 054 90	base	1.00	2
7	90 17 33 004 00-00	handle	1.00	10
6	09 20 67 006-00	handle	1.00	10
11	09 30 30 159-00	screw	1.00	10
19	09 31 11 134 90	pin	1.00	2
10	09 20 33 006-00	handle	1.00	10
2	09 12 12 053-00	base	1.00	10
27	90 15 02 013 00 90	cartridge	1.00	2
1	90 90 03 163 00 90	diverter	1.00	2
21	09 30 30 157 90	screw	4.00	2
22	09 30 01 296 90	disc	1.00	2
18	09 12 12 051-00	base	1.00	10
24	90 23 01 124 00 90	sleeve	2.00	2
3	04 29 06 111 01-00	spindle	1.00	10
13	90 30 30 124 00 90	screw	1.00	2
14	90 12 12 052 00 90	base	1.00	2
25	90 18 40 077 01 90	spindle	2.00	2
4	90 23 30 023 00 90	nut	2.00	2
17	04 29 06 024 01-00	spindle	1.00	10
8	90 21 33 011 00-13	handle	1.00	2