




36 426 710




- rotary diverter with volume control and shut-off function
- cover plate 150 x 90 mm
- temperature control handle with safety limit stop at 38°C
- hot water temperature limiter, can be preset
- single flow function only

	Chrome	36 426 710-00 0010
	Brushed Platinum	36 426 710-06 0010


**Required miscellaneous**

	<b>Concealed thermostat for one- and two-way outlets -</b> ●max. recess depth 136 mm ●min. recess depth 80 mm	35 426 970-90 0010
---	---	--------------------

**Recommended miscellaneous**

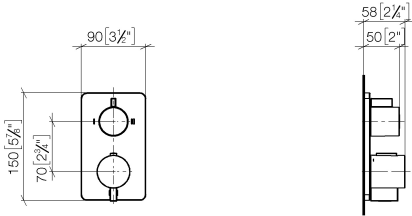
	<b>xGRID Attachment set for integrating in the dry wall construction -</b>	12 340 970 90
---	--	---------------

**Required miscellaneous**

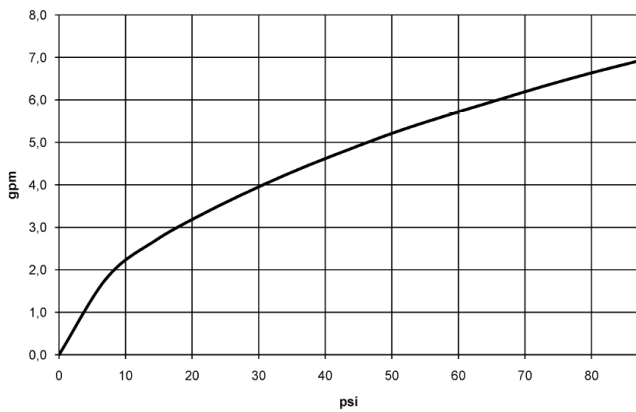
	<b>xGRID Installation track 555 mm -</b>	12 360 970 90
---	--	---------------

36 426 710

mm [inches]



**Flow rate chart**



**Codes & Standards**

ADA

ASME  
A112.18.1/CSA  
B125.1

California Energy  
Commission  
(CEC)

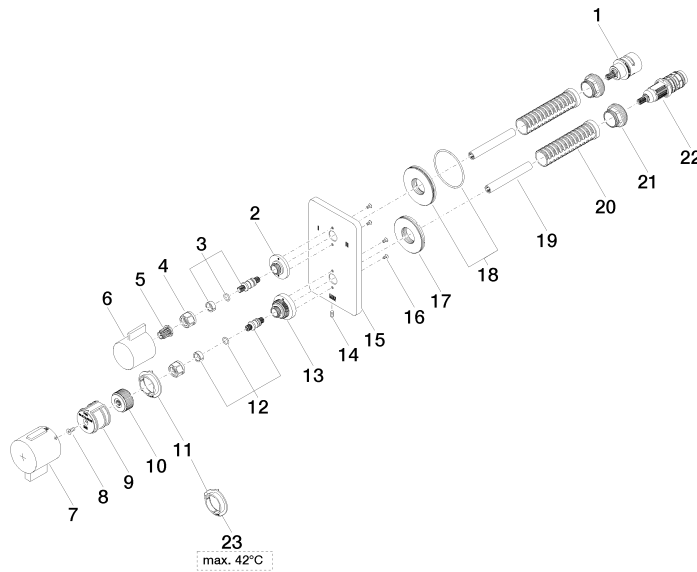
36 426 710

Product version up to 8/24/2020

Product version from 8/24/2020 to 2/1/2021

Product version from 2/1/2021 to 6/30/2022

**Product version from 6/30/2022**





## LULU Concealed thermostat with two function volume control - Chrome

LULU

36 426 710

### Spare parts list

Product version up to 8/24/2020

Product version from 8/24/2020 to 2/1/2021

Product version from 2/1/2021 to 6/30/2022

### Product version from 6/30/2022

No.	Item Number	Name	Quantity used	Delivery time
	90 90 03 163 00 90	diverter	30	2