

**LULU Concealed thermostat with two function volume control - Brushed Platinum**

LULU

36 426 710



- rotary diverter with volume control and shut-off function
- cover plate 150 x 90 mm
- temperature control handle with safety limit stop at 38°C
- hot water temperature limiter, can be preset
- single flow function only



Brushed Platinum

36 426 710-06 0010



Chrome

36 426 710-00 0010

**Required miscellaneous**



**Concealed thermostat for one- and two-way outlets -**

- max. recess depth 136 mm
- min. recess depth 80 mm

35 426 970-90 0010

**Recommended miscellaneous**



**xGRID Attachment set for integrating in the dry wall construction -**

12 340 970 90

**Required miscellaneous**



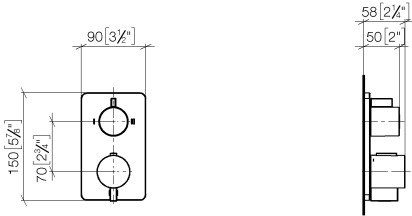
**xGRID Installation track 555 mm -** 12 360 970 90



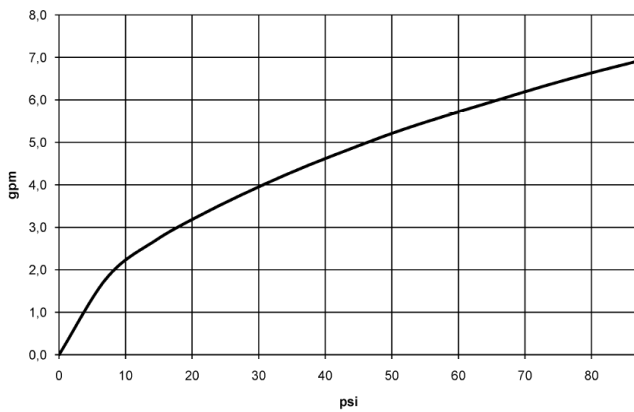
# LULU Concealed thermostat with two function volume control - Brushed Platinum

LULU

36 426 710  
mm [inches]



## Flow rate chart



## Codes & Standards

ADA

ASME  
A112.18.1/CSA  
B125.1

California Energy  
Commission  
(CEC)

LULU Concealed thermostat with two function volume control - Brushed  
Platinum

LULU

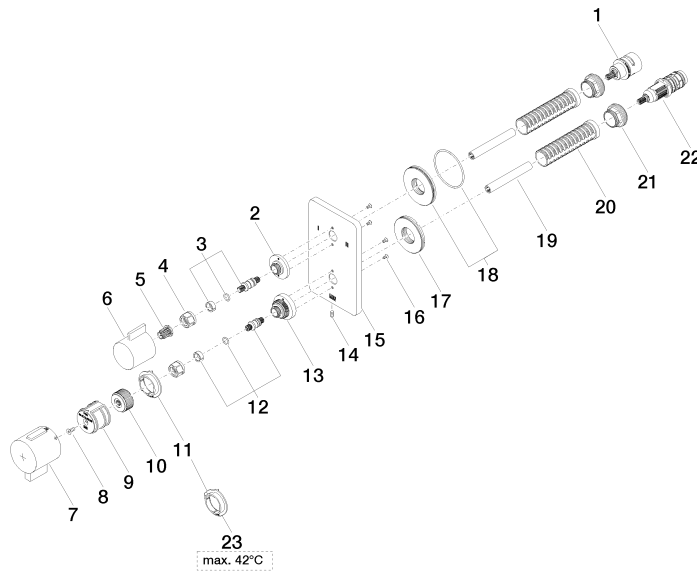
36 426 710

Product version up to 8/24/2020

Product version from 8/24/2020 to 2/1/2021

Product version from 2/1/2021 to 6/30/2022

**Product version from 6/30/2022**





LULU Concealed thermostat with two function volume control - Brushed  
Platinum

---

LULU

36 426 710

Spare parts list

Product version up to 8/24/2020

Product version from 8/24/2020 to 2/1/2021

Product version from 2/1/2021 to 6/30/2022

**Product version from 6/30/2022**

No.	Item Number	Name	Quantity used	Delivery time
	90 90 03 163 00 90	diverter	30	2