



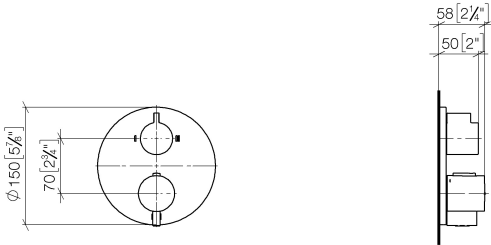
36 426 831 Product version from 1/1/2023



- rotary diverter with volume control and shut-off function
- cover plate Ø 150 mm
- temperature control handle with safety limit stop at 38°C
- hot water temperature limiter, can be preset
- single flow function only

	Soft Black	36 426 831-69 0010
	Chrome	36 426 831-00 0010

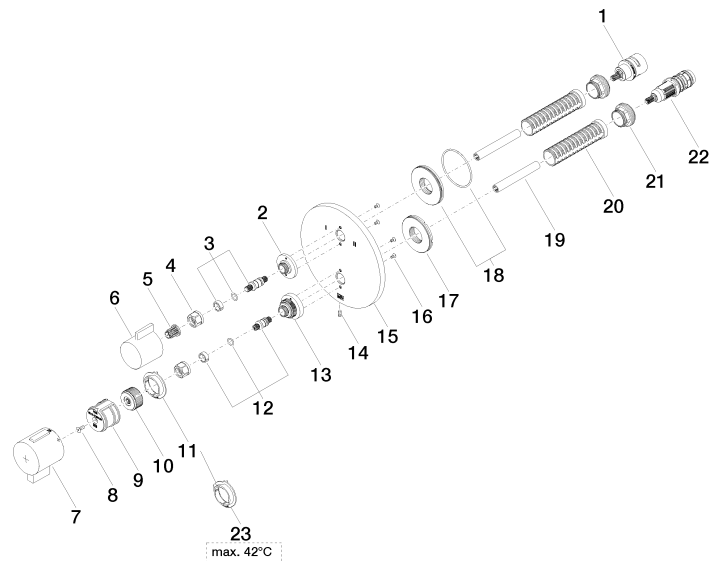
mm [inches]



Codes & Standards	
ADA	California Energy Commission (CEC)

36 426 831 Product version from 1/1/2023

Parts for other  
finishes can be found  
here: [Chrome](#)



## Spare parts list

No.	Item Number	Name	Quantity used	Delivery time
11	09 28 10 190 90	regulator	1.00	2
3	04 29 06 111 01-00	spindle	1.00	10
18	90 30 01 190 00 90	disc	1.00	2
1	90 90 03 166 00 90	top	1.00	2
12	04 29 06 024 01-00	spindle	1.00	10
7	90 17 33 019 00-69	handle	1.00	-
Spare part can no longer be ordered, please order the replacement item				
10	09 12 12 054 90	base	1.00	2
21	09 24 04 257 90	nut	2.00	2
14	09 31 11 134 90	pin	1.00	2
6	09 20 67 006-69	handle	1.00	60
22	90 15 02 013 00 90	cartridge	1.00	2
2	09 12 12 053-69	base	1.00	60
17	09 30 01 296 90	disc	1.00	2
16	09 30 30 157 90	screw	4.00	2
5	90 12 12 002 00 90	fixing cap	1.00	2
23	09 28 10 189 90	regulator	1.00	2
13	09 12 12 051-69	base	1.00	60
9	90 12 12 052 00 90	base	1.00	2
4	90 23 30 023 00 90	nut	2.00	2
8	90 30 30 124 00 90	screw	1.00	2
20	90 18 40 077 01 90	spindle	2.00	2
19	90 23 01 124 00 90	sleeve	2.00	2
15	09 11 02 366-69	plate	1.00	60