




LISSÉ Concealed thermostat with two function volume control - Chrome

LISSÉ


36 426 845
Product version from 3/9/2016 to 8/24/2020




- rotary diverter with volume control and shut-off function
- cover plate 150 x 90 mm
- temperature control handle with safety limit stop at 38°C
- hot water temperature limiter, can be preset
- single flow function only

	Chrome	36 426 845-00 0010
	Brushed Platinum	36 426 845-06 0010
	Dark Chrome	36 426 845-19 0010
	Brushed Light Gold	36 426 845-27 0010
	Matte Black	36 426 845-33 0010
	Brushed Chrome	36 426 845-93 0010
	Brushed Dark Platinum	36 426 845-99 0010


Required miscellaneous

	Concealed thermostat for one- and two-way outlets - ●max. recess depth 136 mm ●min. recess depth 80 mm	35 426 970-90 0010
-----------------------------------------------------------------------------------	---------------------------------------------------------------------------------------------------------------------	--------------------

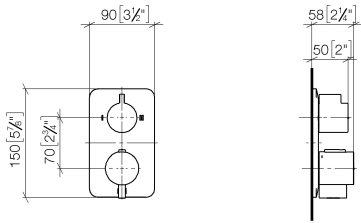
Required miscellaneous

	xGRID Installation track 555 mm -	12 360 970 90
-------------------------------------------------------------------------------------	------------------------------------------	---------------

Recommended miscellaneous

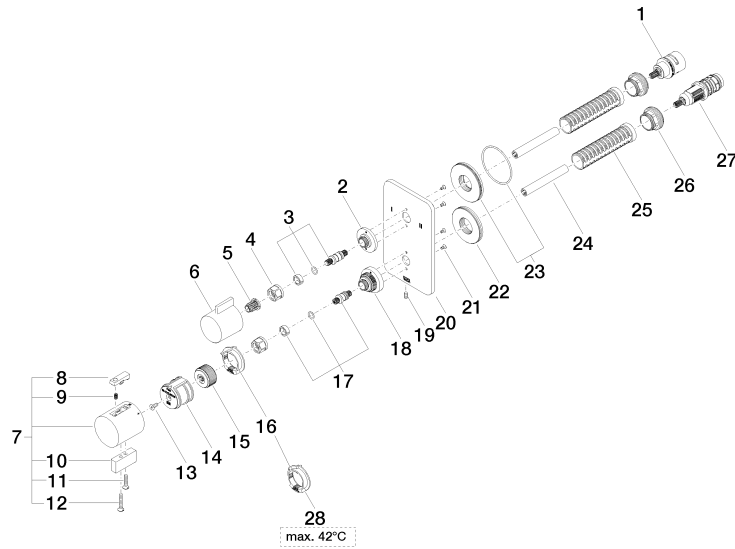
	xGRID Attachment set for integrating in the dry wall construction -	12 340 970 90
-----------------------------------------------------------------------------------	----------------------------------------------------------------------------	---------------

mm [inches]



Codes & Standards

ADA	California Energy Commission (CEC)
-----	------------------------------------





LISSE Concealed thermostat with two function volume control - Chrome

LISSE

36 426 845 Product version from 3/9/2016 to 8/24/2020

Spare parts list

No.	Item Number	Name	Quantity used	Delivery time
16	09 28 10 152 90	regulator	1.00	60
11	09 30 30 159-00	screw	1.00	10
28	09 28 10 151 90	regulator	1.00	60
20	09 11 02 303-00	plate	1.00	10
5	90 12 12 002 00 90	fixing cap	1.00	2
18	09 12 12 051-00	base	1.00	10
1	90 90 03 163 00 90	diverter	1.00	2
23	90 30 01 190 00 90	disc	1.00	2
21	09 30 30 157 90	screw	4.00	2
26	09 24 04 257 90	nut	2.00	2
7	04 17 33 006 00-00	handle	1.00	60
2	09 12 12 053-00	base	1.00	10
9	90 16 02 027 00 90	spring	1.00	2
10	09 20 33 006-00	handle	1.00	10
19	09 31 11 134 90	pin	1.00	2
22	09 30 01 188 90	disc	1.00	60
12	09 30 30 160-00	screw	1.00	10
15	09 12 12 054 90	base	1.00	2
6	09 20 67 006-00	handle	1.00	10
27	90 15 02 012 00 90	cartridge	1.00	60
25	90 18 40 077 01 90	spindle	2.00	2
24	90 23 01 124 00 90	sleeve	2.00	2
14	90 12 12 052 00 90	base	1.00	2
4	90 23 30 023 00 90	nut	2.00	2
17	04 29 06 024 01-00	spindle	1.00	10
13	90 30 30 124 00 90	screw	1.00	2
3	04 29 06 111 01-00	spindle	1.00	10
8	90 21 33 011 00-13	handle	1.00	2