

WATER FAN horizontal Concealed body spray - Brushed Platinum
SERIES-VARIOUS

36 512 979 Product version from 10/1/2023



- forceful flat water jet
- horizontal water jet
- cover plate 240 x 60 mm
- water jet adjustable
- 1/2" connection
- max. flow 6.8 l/min
- This product reduces water consumption by 28% (compared to requirements of EPA '92)
- This product can contribute to Water Use Reduction in LEED® Green Building Rating
- This product can help a building meet the requirements of Green Building Rating Systems, e.g. LEED®, BREEAM®, DGNB

	Brushed Platinum	36 512 979-06 0010
	Chrome	36 512 979-00 0010
	Platinum	36 512 979-08 0010
	Dark Chrome	36 512 979-19 0010
	Light Gold	36 512 979-26 0010
	Brushed Light Gold	36 512 979-27 0010
	Brushed Durabrass (23kt Gold)	36 512 979-28 0010
	Matte Black	36 512 979-33 0010
	Brushed Bronze	36 512 979-42 0010
	Brushed Champagne (22kt Gold)	36 512 979-46 0010
	Champagne (22kt Gold)	36 512 979-47 0010
	Brushed Chrome	36 512 979-93 0010
	Brushed Dark Platinum	36 512 979-99 0010

Required miscellaneous



**Concealed wall installation box -** 35 206 970-90 0010

- max. recess depth 173 mm
- min. recess depth 100 mm

Recommended miscellaneous



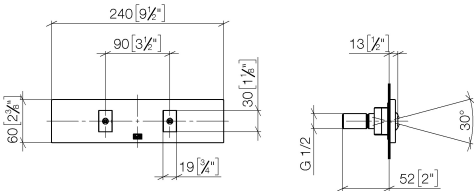
**xGRID Attachment set for integrating in the dry wall construction -** 12 340 970 90

Required miscellaneous



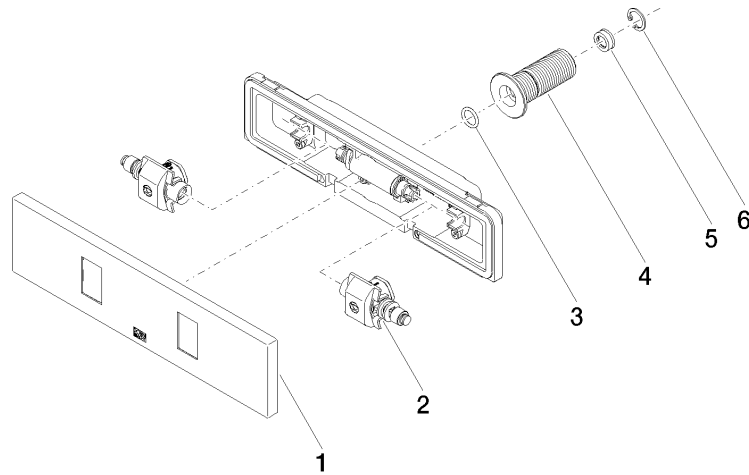
**xGRID Installation track 555 mm -** 12 360 970 90

mm [inches]



Codes & Standards		
ASME A112.18.1	California Energy Commission (CEC)	cUPC

Certificates and sustainability
IAPMO_4976 (



## Spare parts list

No.	Item Number	Name	Quantity used	Delivery time
4	09 24 05 015 90	nipple	1.00	2
3	09 14 10 003 90	seal	1.00	2
2	90 31 10 012 00 90	insert	1.00	2
5	09 23 01 165 90	flow reducer	1.00	2
1	90 27 99 002 00-06	insert	1.00	10
6	09 16 01 014 90	ring	1.00	2