

Wall valve anti-clockwise closing hot 1/2" - Brushed Platinum

SERIES SPECIFIC

36 607 742
Product version from 7/1/2023



- without rosette
- handle Ø 60mm
- with hot marking
- head part with cut-to-length spindle and sleeve
- WRAS

	Brushed Platinum	36 607 742-06
	Chrome	36 607 742-00
	Dark Chrome	36 607 742-19
	Brushed Durabrass (23kt Gold)	36 607 742-28
	Matte Black	36 607 742-33
	Brushed Champagne (22kt Gold)	36 607 742-46
	Champagne (22kt Gold)	36 607 742-47
	Brushed Dark Platinum	36 607 742-99

Required miscellaneous



- Wall valve 1/2" -**
•max. recess depth 145 mm
•min. recess depth 85 mm

35 607 970-90
0010



Wall valve anti-clockwise closing hot 1/2" - Brushed Platinum

SERIES SPECIFIC

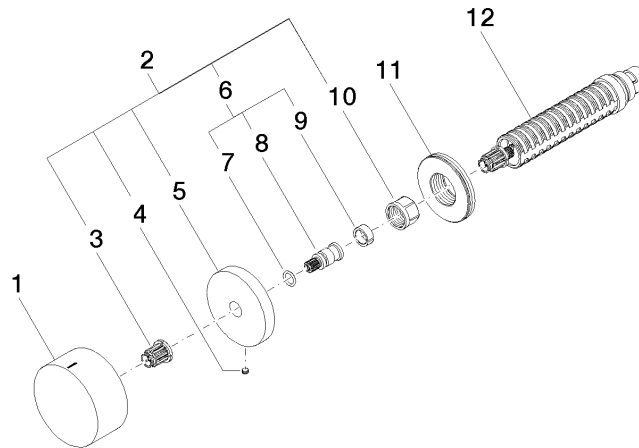
36 607 742 Product version from 7/1/2023

mm [inches]



Codes & Standards			
ASME A112.18.1	cUPC	DIN 4109	EN 200
ISO 3822	Scottish Water Byelaws	UK Water Supply Regulations	Ü-Zeichen

Certificates and sustainability				
DVGW_DW-6501DN0	LGA_38	LGA_29	WRAS_2010	LGA_29
IAPMO_4976 (



Spare parts list

No.	Item Number	Name	Quantity used	Delivery time
	2 04 27 74 004 00-06	rosette	1.00	10
	11 09 30 01 107 90	sleeve	1.00	2
	8 09 29 06 020-06	spindle	1.00	-
Spare part can no longer be ordered, please order the replacement item				
	5 09 27 74 004-06	rosette	1.00	10
	12 90 90 03 142 00 90	top	1.00	2
	3 90 12 12 002 00 90	fixing cap	1.00	2
	4 09 31 11 055 90	pin	1.00	2
	1 09 20 74 021-06	handle (hot)	1.00	10
	6 04 29 06 020 00-00	spindle	1.00	10
	9 90 14 15 020 03 90	ring	1.00	2
	7 90 14 10 060 00 90	seal	1.00	2
	10 90 23 30 023 00 90	nut	1.00	2