


36 607 892

- rosette Ø 55 mm
- head part with cut-to-length spindle and sleeve
- WRAS 2011026, 2010066



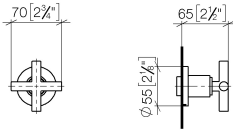
	Chrome	36 607 892-00
	Brushed Platinum	36 607 892-06
	Platinum	36 607 892-08
	Dark Chrome	36 607 892-19
	Brushed Durabronze (23kt Gold)	36 607 892-28
	Matte Black	36 607 892-33
	Brushed Bronze	36 607 892-42
	Brushed Champagne (22kt Gold)	36 607 892-46
	Champagne (22kt Gold)	36 607 892-47
	Brushed Chrome	36 607 892-93
	Brushed Dark Platinum	36 607 892-99

Required miscellaneous

	Wall valve 1/2" - •max. recess depth 145 mm •min. recess depth 85 mm	35 607 970-90 0010
---	---	-----------------------

36 607 892

mm [inches]



Codes & Standards

ADA	ASME A112.18.1	ASME A112.18.1/CSA B125.1	cUPC
DIN 4109	EN 1111	EN 200	ISO 3822
Scottish Water Byelaws	UK Water Supply Regulations	Ü-Zeichen	

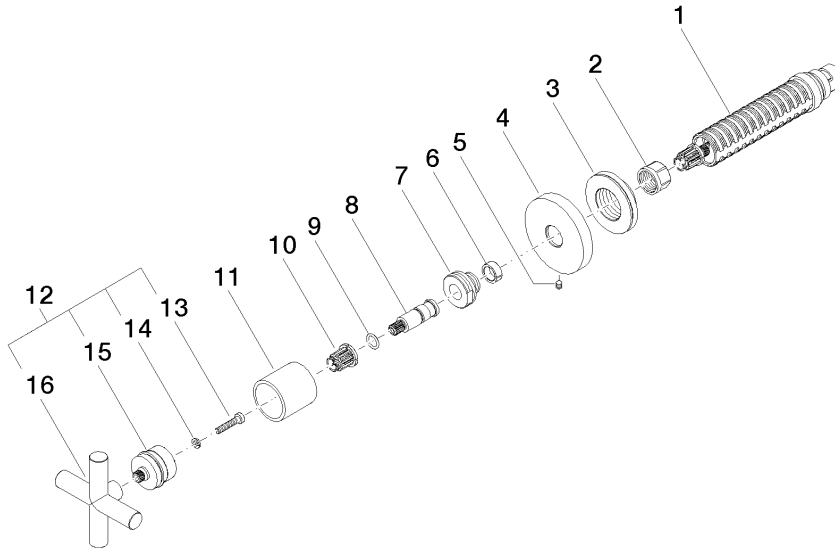
Certificates

IAPMO_4976	DVGW_DW- 6501DN0	WRAS_2010	LGA_29	LGA_29
DVGW_DW- 6512DN0	WRAS_2011			

36 607 892

Product version up to 10/27/2020

Product version from 10/27/2020





TARA Wall valve clockwise closing 1/2" - Chrome

TARA

36 607 892

Spare parts list

Product version up to 10/27/2020

Product version from 10/27/2020

No.	Item Number	Name	Quantity used	Delivery time
	90 90 03 143 00 90	top	16	2