


36 607 892

- rosette Ø 55 mm
- head part with cut-to-length spindle and sleeve
- WRAS 2011026, 2010066



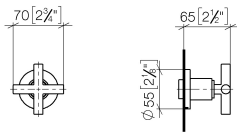
|  |                                |               |
|--|--------------------------------|---------------|
|    | Brushed Dark Platinum          | 36 607 892-99 |
|    | Chrome                         | 36 607 892-00 |
|    | Brushed Platinum               | 36 607 892-06 |
|    | Platinum                       | 36 607 892-08 |
|    | Dark Chrome                    | 36 607 892-19 |
|    | Brushed Durabronze (23kt Gold) | 36 607 892-28 |
|    | Matte Black                    | 36 607 892-33 |
|    | Brushed Bronze                 | 36 607 892-42 |
|   | Brushed Champagne (22kt Gold)  | 36 607 892-46 |
|  | Champagne (22kt Gold)          | 36 607 892-47 |
|  | Brushed Chrome                 | 36 607 892-93 |

**Required miscellaneous**

|   |   |                       |
|---|---|-----------------------|
|  | <b>Wall valve 1/2" -</b><br>•max. recess depth 145 mm<br>•min. recess depth 85 mm | 35 607 970-90<br>0010 |
|---|---|-----------------------|

36 607 892

mm [inches]



Codes & Standards

|                           |                                |                                 |          |
|---------------------------|--------------------------------|---------------------------------|----------|
| ADA                       | ASME A112.18.1                 | ASME<br>A112.18.1/CSA<br>B125.1 | cUPC     |
| DIN 4109                  | EN 1111                        | EN 200                          | ISO 3822 |
| Scottish Water<br>Byelaws | UK Water Supply<br>Regulations | Ü-Zeichen                       |          |

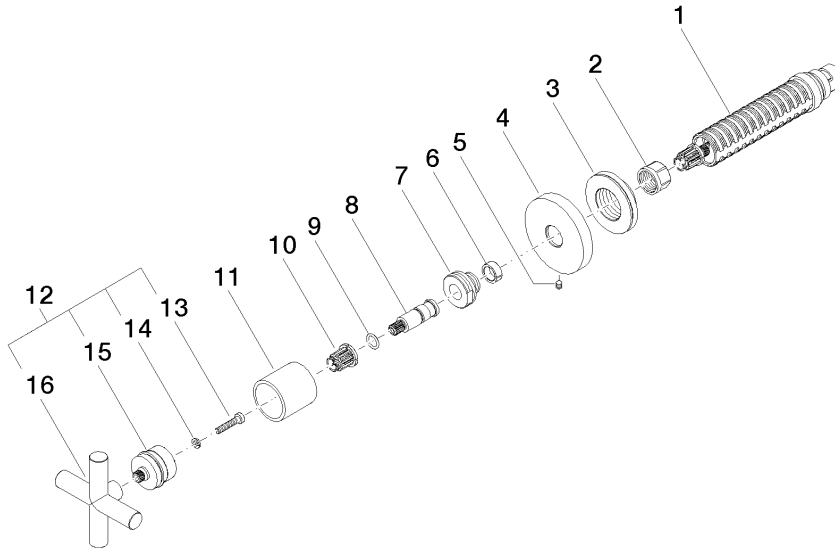
Certificates

|                     |                     |           |        |        |
|---------------------|---------------------|-----------|--------|--------|
| IAPMO_4976          | DVGW_DW-<br>6501DN0 | WRAS_2010 | LGA_29 | LGA_29 |
| DVGW_DW-<br>6512DN0 | WRAS_2011           |           |        |        |

36 607 892

Product version up to 10/27/2020

**Product version from 10/27/2020**





TARA Wall valve clockwise closing 1/2" - Brushed Dark Platinum

TARA

36 607 892

Spare parts list

Product version up to 10/27/2020

**Product version from 10/27/2020**

| No. | Item Number        | Name | Quantity used | Delivery time |
|-----|--------------------|------|---------------|---------------|
|     | 90 90 03 143 00 90 | top  | 16            | 2             |