

CYO Wall-mounted basin mixer without pop-up waste - Brushed Platinum








36 707 811



- 160mm projection
- fixed spout
- rectangular, air-enriched flow
- hole diameter valve 37 mm
- hole diameter spout 37 mm
- handle Ø 60mm
- max. flow 4.5 l/min
- lead-free
- This product can help a building meet the requirements of Green Building Rating Systems, e.g. LEED®, BREEAM®, DGNB
- WRAS

NOTE: The handle inserts must be ordered separately from the fittings!

NOTE: The handle inserts must be ordered separately from the fittings!

	Brushed Platinum	36 707 811-06
	Chrome	36 707 811-00
	Dark Chrome	36 707 811-19
	Brushed Durabronze (23kt Gold)	36 707 811-28
	Platinum / Brushed Platinum	36 707 811-36
	Durabronze / Brushed Durabronze (23kt Gold)	36 707 811-38
	Brushed Dark Platinum	36 707 811-99

Required miscellaneous



- | | |
|---|---------------|
| Concealed wall-mounted mixer centred spout - | 35 700 970-90 |
| •max. recess depth mm | 0010 |
| •min. recess depth mm | |

Required miscellaneous



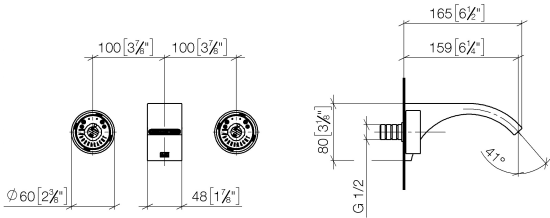
- | | |
|--|---------------|
| Concealed wall-mounted mixer variable positioning - | 35 720 970-90 |
| •max. recess depth mm | 0010 |
| •min. recess depth mm | |



CYO Wall-mounted basin mixer without pop-up waste - Brushed Platinum

36 707 811

mm [inches]



Flow rate chart



Codes & Standards

California Energy Commission (CEC)

DIN 4109

ISO 3822

NSF372

NSF61

Scottish Water Byelaws

UK Water Supply Regulations

Ü-Zeichen

Water Sense



CYO Wall-mounted basin mixer without pop-up waste - Brushed Platinum

36 707 811

Certificates

WRAS_2111

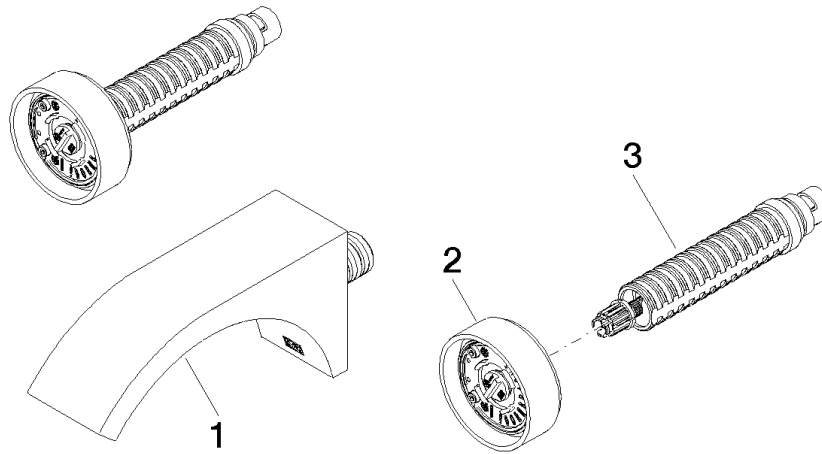
IAPMO_N-4976

IAPMO_6397

LGA_38

CYO Wall-mounted basin mixer without pop-up waste - Brushed Platinum

36 707 811



Spare parts list

No.	Item Number	Name	Quantity used	Delivery time
1	13 800 811-06	CYO Wall-mounted basin spout without pop-up waste - Brushed Platinum	1	10
2	90 18 40 290 00-06	handle	1	10
3	90 90 03 171 01 90	top	1	2