

## TARA Wall-mounted basin mixer without pop-up waste - Brushed Platinum

TARA

36 707 882 Product version from 4/1/2024



- 160mm projection
- fixed spout
- circular, air-enriched flow
- hole diameter valve 40 mm
- hole diameter spout 40 mm
- rosette Ø 55 mm
- max. flow 4.5 l/min
- lead-free
- This product can help a building meet the requirements of Green Building Rating Systems, e.g. LEED®, BREEAM®, DGNB

	Brushed Platinum	36 707 882-06 0010
	Chrome	36 707 882-00 0010
	Platinum	36 707 882-08 0010
	Dark Chrome	36 707 882-19 0010
	Brushed Durabronze (23kt Gold)	36 707 882-28 0010
	Matte Black	36 707 882-33 0010
	Brushed Bronze	36 707 882-42 0010
	Brushed Champagne (22kt Gold)	36 707 882-46 0010
	Champagne (22kt Gold)	36 707 882-47 0010
	Brushed Chrome	36 707 882-93 0010
	Brushed Dark Platinum	36 707 882-99 0010

### Required miscellaneous



- Concealed wall-mounted mixer centred spout -** 35 700 970-90 0010
- max. recess depth 145 mm
  - min. recess depth 85 mm

### Required miscellaneous

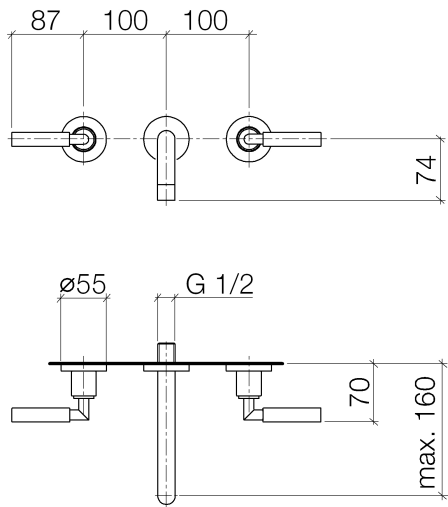


- Concealed wall-mounted mixer variable positioning -** 35 720 970-90 0010
- max. recess depth 145 mm
  - min. recess depth 85 mm

TARA Wall-mounted basin mixer without pop-up waste - Brushed Platinum

TARA

36 707 882    Product version from 4/1/2024

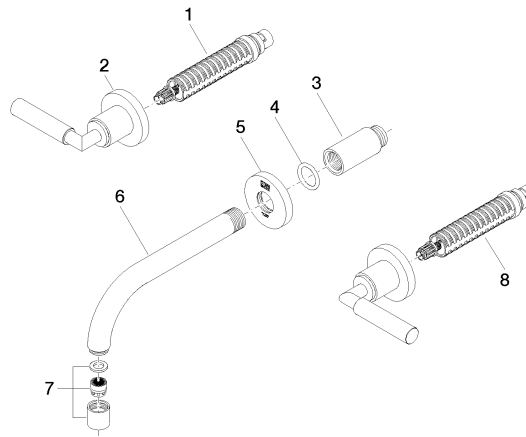


Codes & Standards

ADA	ASME A112.18.1	California Energy Commission (CEC)	cUPC
EPA WaterSense	NSF372	NSF61	WaterSense

Certificates and sustainability

IAPMO_N-4976	IAPMO_6397	IAPMO_4976 (	IAPMO_8834
--------------	------------	--------------	------------



## Spare parts list

No.	Item Number	Name	Quantity used	Delivery time
6	04 28 22 089 10-06	spout	1.00	10
7	90 23 01 019 02-06	aerator	1.00	10
3	09 24 03 081 10 90	extension	1.00	2
5	09 27 22 501-06	rosette	1.00	10
8	90 90 03 157 00 90	top	1.00	2
1	90 90 03 156 00 90	top	1.00	2
2	36 310 882-06	connection	2.00	10
4	90 14 10 026 00 90	seal	1.00	2