

## VAIA Wall-mounted basin mixer without pop-up waste - Brushed Platinum

VAIA

36 712 819 Product version from 3/13/2017



- 190mm projection
- fixed spout
- circular, air-enriched flow
- hole diameter valve 37 mm
- hole diameter spout 40 mm
- rosettes Ø 60 mm
- max. flow 4.5 l/min
- lead-free
- This product can help a building meet the requirements of Green Building Rating Systems, e.g. LEED®, BREEAM®, DGNB

	Brushed Platinum	36 712 819-06 0010
	Chrome	36 712 819-00 0010
	Platinum	36 712 819-08 0010
	Dark Chrome	36 712 819-19 0010
	Brushed Durabrass (23kt Gold)	36 712 819-28 0010
	Brushed Bronze	36 712 819-42 0010
	Brushed Champagne (22kt Gold)	36 712 819-46 0010
	Champagne (22kt Gold)	36 712 819-47 0010
	Brushed Dark Platinum	36 712 819-99 0010

### Required miscellaneous

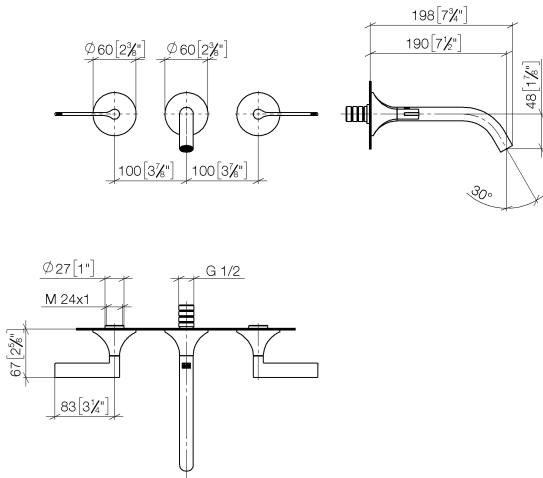


- Concealed wall-mounted mixer centred spout -** 35 700 970-90 0010
- max. recess depth 145 mm
  - min. recess depth 85 mm

### Required miscellaneous



- Concealed wall-mounted mixer variable positioning -** 35 720 970-90 0010
- max. recess depth 145 mm
  - min. recess depth 85 mm



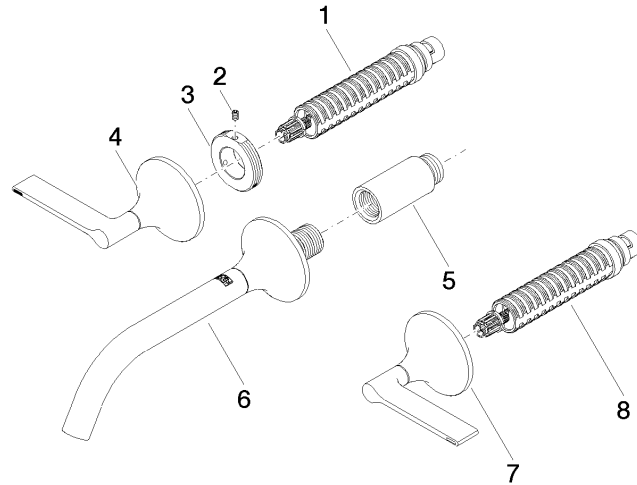
Codes & Standards

ADA	ASME A112.18.1	California Energy Commission (CEC)	cUPC
EPA WaterSense	NSF372	NSF61	WaterSense



Certificates and sustainability

IAPMO_N-4976	IAPMO_6397	IAPMO_4976 (	IAPMO_8834
--------------	------------	--------------	------------



## Spare parts list

No.	Item Number	Name	Quantity used	Delivery time
7	90 20 80 012 00-06	handle ( cold )	1.00	10
4	90 20 80 013 00-06	handle ( hot )	1.00	10
3	09 21 02 163 90	disc	2.00	2
5	09 24 03 081 10 90	extension	1.00	2
2	09 31 11 008 90	pin	2.00	2
6	13 800 809-06 0010	VAIA Wall-mounted basin spout without pop-up waste - Brushed Platinum	1.00	-
Spare part can no longer be ordered, please order the replacement item				
8	90 90 03 157 00 90	top	1.00	2
1	90 90 03 156 00 90	top	1.00	2