

META Wall-mounted single-lever basin mixer without pop-up waste - Brushed Platinum

META


36 804 661



- 160mm projection
- fixed spout
- circular, air-enriched flow
- hole diameter 60 mm
- rosette Ø 78 mm
- max. flow 4.5 l/min
- lead-free
- with single-point mounting
- This product can help a building meet the requirements of Green Building Rating Systems, e.g. LEED®, BREEAM®, DGNB

	Brushed Platinum	36 804 661-06 0010
	Chrome	36 804 661-00 0010
	Dark Chrome	36 804 661-19 0010
	Light Gold	36 804 661-26 0010
	Brushed Light Gold	36 804 661-27 0010
	Matte Black	36 804 661-33 0010
	Brushed Bronze	36 804 661-42 0010
	Brushed Champagne (22kt Gold)	36 804 661-46 0010
	Champagne (22kt Gold)	36 804 661-47 0010
	Brushed Chrome	36 804 661-93 0010
	Brushed Dark Platinum	36 804 661-99 0010

Required miscellaneous

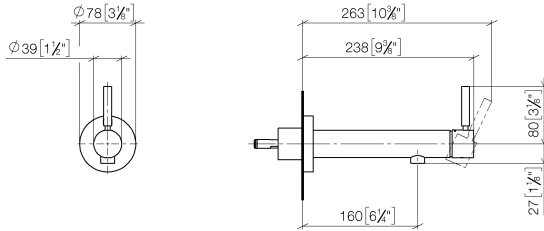
	Concealed wall mounting - •max. recess depth 103 mm •min. recess depth 78 mm	35 003 970-90 0010
---	---	-----------------------



META Wall-mounted single-lever basin mixer without pop-up waste - Brushed Platinum

META

36 804 661
mm [inches]



Flow rate chart



Codes & Standards

ADA

ASME
A112.18.1/CSA
B125.1

California Energy
Commission
(CEC)

NSF/ANSI 372

NSF/ANSI/CAN
61

Water Sense





META Wall-mounted single-lever basin mixer without pop-up waste - Brushed
Platinum

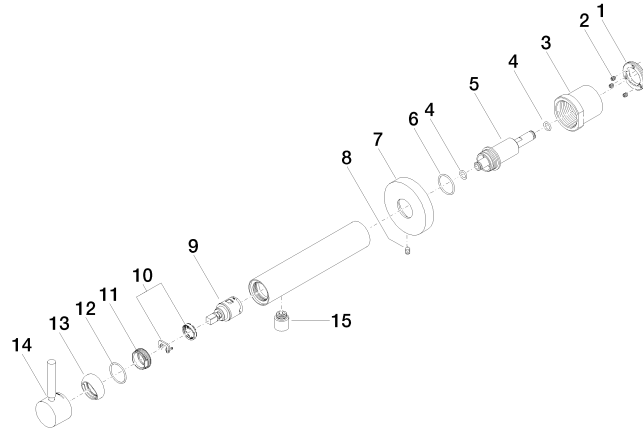
META

36 804 661

Certificates

IAPMO_N-4976 (2). IAPMO_8834 (2). IAPMO_6397 (2). IAPMO_4976 (1).

36 804 661



Spare parts list

No.	Item Number	Name	Quantity used	Delivery time
1	09 24 77 002 90	nut	1	2
2	90 31 11 030 00 90	pin	3	2
3	09 21 02 128 90	sleeve	1	2
4	09 14 10 139 90	seal	2	2
5	09 24 04 210 10 90	nipple	1	2
6	90 14 10 063 00 90	seal	1	2
7	09 27 88 009-06	rosette	1	10
8	09 31 11 144 90	pin	1	2
9	90 15 05 042 00 90	cartridge	1	2
10	90 28 10 148 00 90	accessories	1	2
11	09 24 04 266 90	nut	1	2
12	09 14 10 120 90	seal	1	2
13	09 28 30 043-06	cover	1	10
14	90 20 66 009 00-06	handle	1	10
15	90 23 01 168 01-06	aerator	1	10