


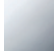

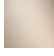


**CL.1 Wall-mounted single-lever basin mixer without pop-up waste - Dark Chrome**

CL.1

36 860 705



- 198mm projection
- fixed spout
- rectangular spray pattern with 40 individual jets
- hole diameter spout 37 mm
- hole diameter single-lever mixer 57 mm
- rosette 80 x 80 mm
- max. flow 4.5 l/min
- lead-free
- This product can help a building meet the requirements of Green Building Rating Systems, e.g. LEED®, BREEAM®, DGNB

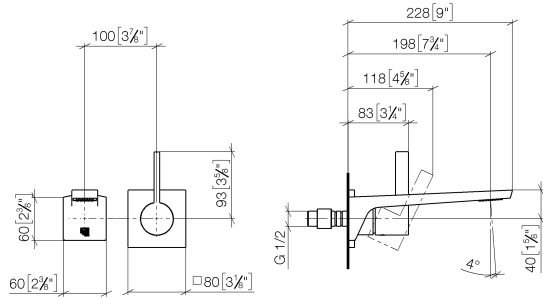
	Dark Chrome	36 860 705-19
	Chrome	36 860 705-00
	Brushed Platinum	36 860 705-06
	Brushed Champagne (22kt Gold)	36 860 705-46
	Champagne (22kt Gold)	36 860 705-47
	Brushed Dark Platinum	36 860 705-99



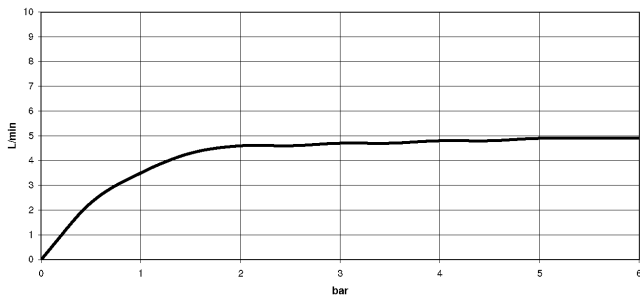
# CL.1 Wall-mounted single-lever basin mixer without pop-up waste - Dark Chrome

CL.1

36 860 705  
mm [inches]



## Flow rate chart



## Codes & Standards

ADA

ASME  
A112.18.1/CSA  
B125.1

California Energy  
Commission  
(CEC)

NSF/ANSI 372

NSF/ANSI/CAN  
61



CL.1 Wall-mounted single-lever basin mixer without pop-up waste - Dark  
Chrome

---

CL.1

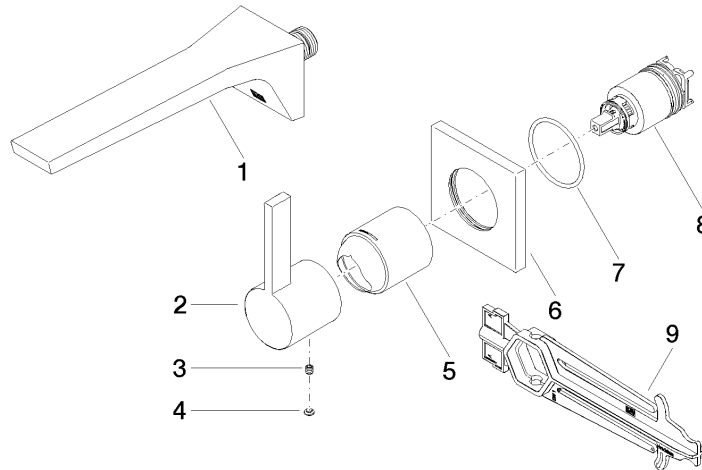
36 860 705

Certificates

---

IAPMO\_N-4976 (2). DVGW\_DW- IAPMO\_6397 (2).  
6512DN0435.

36 860 705  
Parts for other  
finishes can be found  
here: [Chrome](#)



### Spare parts list

No.	Item Number	Name	Quantity used	Delivery time
1	13 800 705-19	CL.1 Wall-mounted basin spout without pop-up waste - Dark Chrome	1	20
2	09 20 70 050-19	handle	1	60
3	90 31 11 030 00 90	pin	1	2
4	90 31 20 087 00-19	plug	1	20
5	09 11 02 288-19	cover	1	20
6	09 27 78 039-19	rosette	1	60
7	90 14 10 049 00 90	seal	1	2
8	90 15 05 064 01 90	cartridge	1	2
9	90 30 09 064 00 90	key	1	2