







**CL.1 Wall-mounted single-lever basin mixer without pop-up waste -
Champagne (22kt Gold)**

CL.1

36 860 705



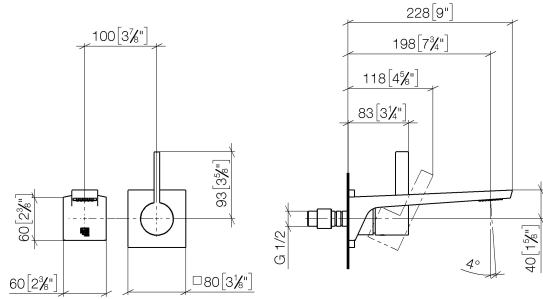
- 198mm projection
- fixed spout
- rectangular spray pattern with 40 individual jets
- hole diameter spout 37 mm
- hole diameter single-lever mixer 57 mm
- rosette 80 x 80 mm
- max. flow 4.5 l/min
- lead-free
- This product can help a building meet the requirements of Green Building Rating Systems, e.g. LEED®, BREEAM®, DGNB

	Champagne (22kt Gold)	36 860 705-47
	Chrome	36 860 705-00
	Brushed Platinum	36 860 705-06
	Dark Chrome	36 860 705-19
	Brushed Champagne (22kt Gold)	36 860 705-46
	Brushed Dark Platinum	36 860 705-99

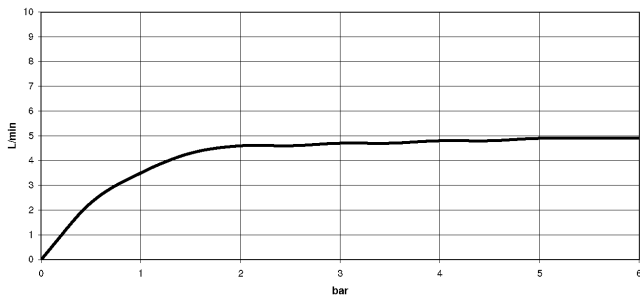
**CL.1 Wall-mounted single-lever basin mixer without pop-up waste -
Champagne (22kt Gold)**

CL.1

36 860 705
mm [inches]



Flow rate chart



Codes & Standards

ADA

ASME
A112.18.1/CSA
B125.1

California Energy
Commission
(CEC)

NSF/ANSI 372

NSF/ANSI/CAN
61

Water Sense





CL.1 Wall-mounted single-lever basin mixer without pop-up waste -
Champagne (22kt Gold)

CL.1

36 860 705

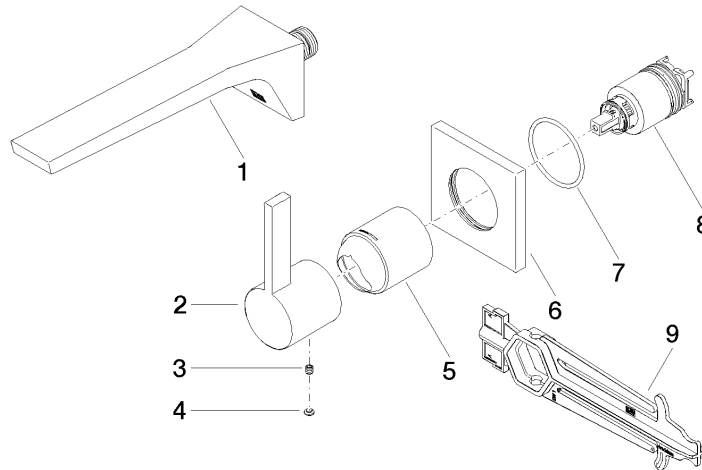
Certificates

IAPMO_N-4976 (2). DVGW_DW- IAPMO_8834 (2). IAPMO_6397 (2).
6512DN0435.

**CL.1 Wall-mounted single-lever basin mixer without pop-up waste -
Champagne (22kt Gold)**

CL.1

36 860 705
Parts for other
finishes can be found
here: [Chrome](#)



Spare parts list

No.	Item Number	Name	Quantity used	Delivery time
1	13 800 705-47	CL.1 Wall-mounted basin spout without pop-up waste - Champagne (22kt Gold)	1	30
2	09 20 70 050-47	handle	1	60
3	90 31 11 030 00 90	pin	1	2
4	90 31 20 087 00-47	plug	1	30
5	09 11 02 288-47	cover	1	30
6	09 27 78 039-47	rosette	1	60
7	90 14 10 049 00 90	seal	1	2
8	90 15 05 064 01 90	cartridge	1	2
9	90 30 09 064 00 90	key	1	2