

LULU Wall-mounted single-lever basin mixer without pop-up waste - Brushed Platinum

LULU

36 860 710



- 200mm projection
- fixed spout
- circular, air-enriched flow
- hole diameter spout 37 mm
- hole diameter single-lever mixer 57 mm
- rosette 78 x 78 mm
- max. flow 4.5 l/min
- lead-free
- This product can help a building meet the requirements of Green Building Rating Systems, e.g. LEED®, BREEAM®, DGNB



Brushed Platinum

36 860 710-06 0010



Chrome

36 860 710-00 0010

Required miscellaneous



Concealed wall-mounted single-lever mixer -

35 860 970-90
0010

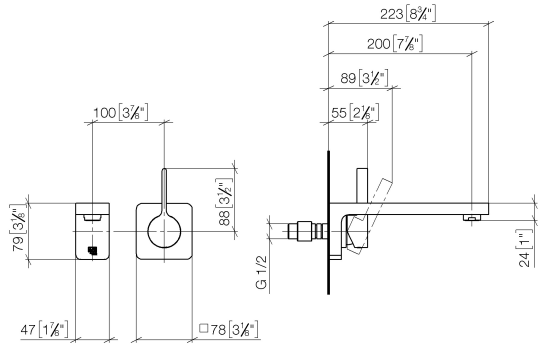
- max. recess depth 95 mm
- min. recess depth 80 mm
- Rough can be rotated to position the lever on top or to the left of the spout.



LULU Wall-mounted single-lever basin mixer without pop-up waste - Brushed Platinum

LULU

36 860 710
mm [inches]



Codes & Standards

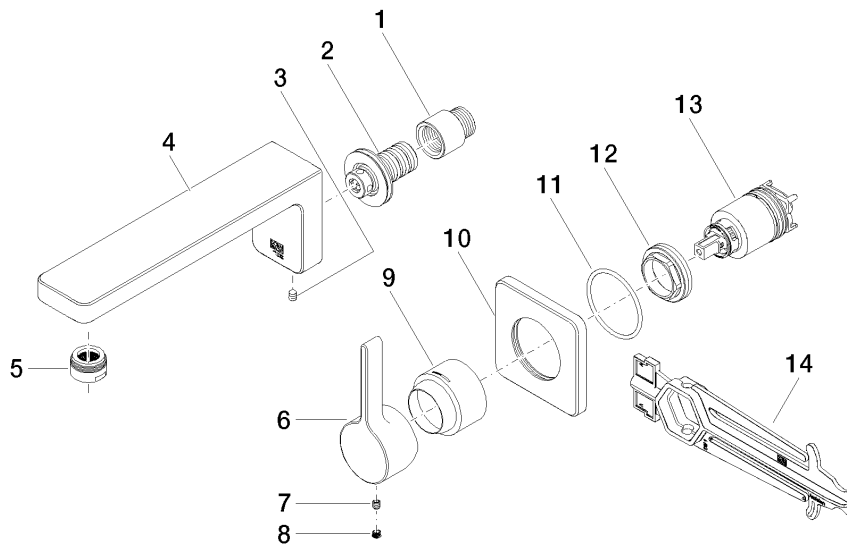
ADA	ASME A112.18.1	California Energy Commission (CEC)	cUPC
EPA WaterSense	NSF372	NSF61	WaterSense



Certificates and sustainability

IAPMO_N-4976	IAPMO_6397	IAPMO_8834	IAPMO_4976 (
--------------	------------	------------	--------------

36 860 710



Spare parts list

No.	Item Number	Name	Quantity used	Delivery time
5	90 23 01 118 04-06	aerator	1.00	10
2	90 24 03 108 00 90	nipple set	1.00	2
4	09 11 71 091-06	spout	1.00	10
10	09 27 71 001-06	rosette	1.00	60
13	90 15 05 064 01 90	cartridge	1.00	2
9	09 11 02 530-06	cover	1.00	10
12	09 24 04 105 90	nut	1.00	2
1	09 24 03 072 10 90	nipple	1.00	2
6	09 20 71 001-06	handle	1.00	60
11	90 14 10 049 00 90	seal	1.00	2
3	90 31 11 004 00 90	pin	1.00	2
7	90 31 11 030 00 90	pin	1.00	2
14	90 30 09 064 00 90	key	1.00	2
8	90 31 20 109 00 90	plug	1.00	2