

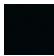
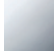

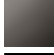

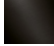
**LISSÉ Wall-mounted single-lever basin mixer without pop-up waste - Matte Black**

LISSÉ

36 860 845



- 170mm projection
- fixed spout
- circular, air-enriched flow
- hole diameter spout 37 mm
- hole diameter single-lever mixer 57 mm
- rosette 78 x 78 mm
- max. flow 5.7 l/min
- lead-free
- This product can help a building meet the requirements of Green Building Rating Systems, e.g. LEED®, BREEAM®, DGNB
- WRAS 2107018

	Matte Black	36 860 845-33
	Chrome	36 860 845-00
	Brushed Platinum	36 860 845-06
	Dark Chrome	36 860 845-19
	Brushed Chrome	36 860 845-93
	Brushed Dark Platinum	36 860 845-99

**Required miscellaneous**



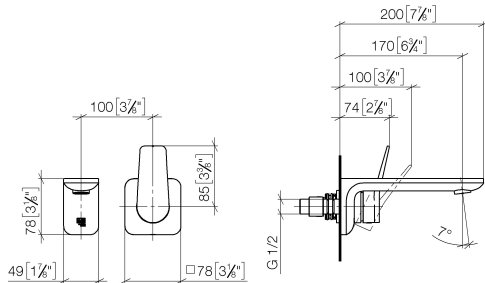
- Concealed wall-mounted single-lever mixer -** 35 860 970-90  
0010
- min. recess depth 80 mm
  - Rough can be rotated to position the lever on top or to the left of the spout.
  - max. recess depth 95 mm



# LISSÉ Wall-mounted single-lever basin mixer without pop-up waste - Matte Black

LISSÉ

36 860 845  
mm [inches]



## Flow rate chart



## Codes & Standards

ADA

ASME  
A112.18.1/CSA  
B125.1

NSF/ANSI 372

NSF/ANSI/CAN  
61

Water Sense





LISSÉ Wall-mounted single-lever basin mixer without pop-up waste - Matte  
Black

---

LISSÉ

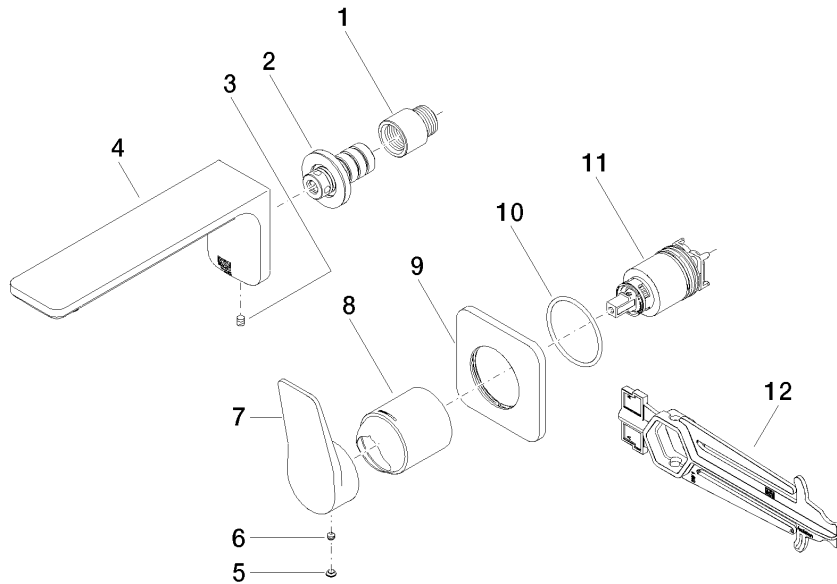
36 860 845

Certificates

---

IAPMO\_N-4976 (2). DVGW\_DW-6512DN0435. IAPMO\_8834 (2). IAPMO\_6397 (2). WRAS\_2107018.

36 860 845



### Spare parts list

No.	Item Number	Name	Quantity used	Delivery time
1	09 24 03 072 10 90	nipple	1	2
2	90 24 03 108 00 90	nipple set	1	2
3	90 31 11 004 00 90	pin	1	2
4	90 11 84 021 00-33	spout	1	30
5	90 31 20 087 00-33	plug	1	30
6	90 31 11 063 00 90	pin	1	2
7	09 20 84 021-33	handle	1	30
8	09 11 02 288-33	cover	1	30
9	90 27 84 020 00-33	rosette	1	30
10	90 14 10 049 00 90	seal	1	2
11	90 15 05 064 01 90	cartridge	1	2
12	90 30 09 064 00 90	key	1	2