




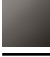

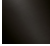
**LISSÉ Wall-mounted single-lever basin mixer without pop-up waste - Brushed Chrome**

LISSÉ

36 860 845



- 170mm projection
- fixed spout
- circular, air-enriched flow
- hole diameter spout 37 mm
- hole diameter single-lever mixer 57 mm
- rosette 78 x 78 mm
- max. flow 5.7 l/min
- lead-free
- This product can help a building meet the requirements of Green Building Rating Systems, e.g. LEED®, BREEAM®, DGNB
- WRAS 2107018

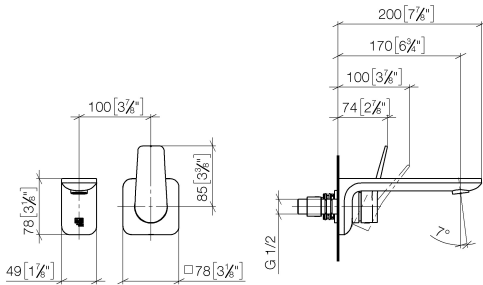
	Brushed Chrome	36 860 845-93
	Chrome	36 860 845-00
	Brushed Platinum	36 860 845-06
	Dark Chrome	36 860 845-19
	Matte Black	36 860 845-33
	Brushed Dark Platinum	36 860 845-99



# LISSÉ Wall-mounted single-lever basin mixer without pop-up waste - Brushed Chrome

LISSÉ

36 860 845  
mm [inches]



## Flow rate chart



## Codes & Standards

ADA

ASME  
A112.18.1/CSA  
B125.1

NSF/ANSI 372

NSF/ANSI/CAN  
61

Water Sense





LISSÉ Wall-mounted single-lever basin mixer without pop-up waste - Brushed Chrome

LISSÉ

---

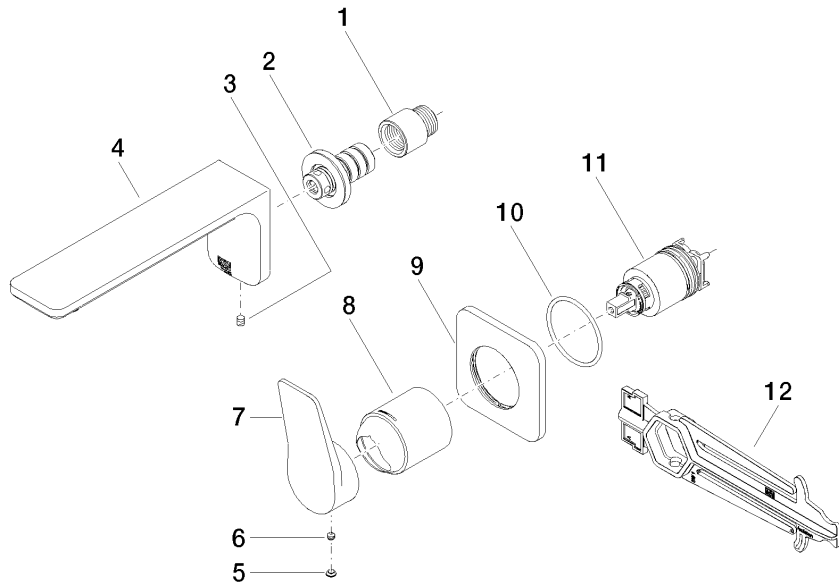
36 860 845

Certificates

---

IAPMO_N-4976 (2).	DVGW_DW-6512DN0435.	IAPMO_8834 (2).	IAPMO_6397 (2).	IAPMO_4976 (2).
LGA_29900.	WRAS_2107018.			

36 860 845  
Parts for other  
finishes can be found  
here: Chrome



**Spare parts list**

No.	Item Number	Name	Quantity used	Delivery time
1	09 24 03 072 10 90	nipple	1	2
2	90 24 03 108 00 90	nipple set	1	2
3	90 31 11 004 00 90	pin	1	2
4	90 11 84 021 00-93	spout	1	20
5	90 31 20 087 00-93	plug	1	20
6	90 31 11 063 00 90	pin	1	2
7	09 20 84 021-93	handle	1	20
8	09 11 02 288-93	cover	1	20
9	90 27 84 020 00-93	rosette	1	20
10	90 14 10 049 00 90	seal	1	2
11	90 15 05 064 01 90	cartridge	1	2
12	90 30 09 064 00 90	key	1	2