


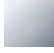




**LISSÉ Wall-mounted single-lever basin mixer without pop-up waste - Brushed Dark Platinum**

LISSÉ

36 860 845



- 170mm projection
- fixed spout
- circular, air-enriched flow
- hole diameter spout 37 mm
- hole diameter single-lever mixer 57 mm
- rosette 78 x 78 mm
- max. flow 5.7 l/min
- lead-free
- This product can help a building meet the requirements of Green Building Rating Systems, e.g. LEED®, BREEAM®, DGNB

	Brushed Dark Platinum	36 860 845-99
	Chrome	36 860 845-00
	Brushed Platinum	36 860 845-06
	Dark Chrome	36 860 845-19
	Matte Black	36 860 845-33
	Brushed Chrome	36 860 845-93

**Required miscellaneous**



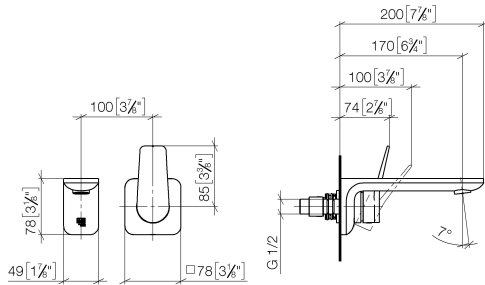
- Concealed wall-mounted single-lever mixer -** 35 860 970-90  
0010
- min. recess depth 80 mm
  - Rough can be rotated to position the lever on top or to the left of the spout.
  - max. recess depth 95 mm



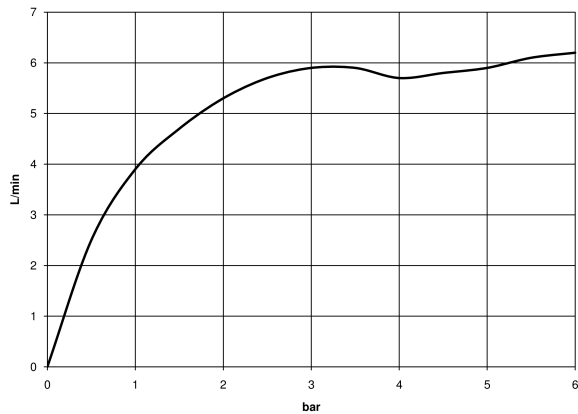
# LISSÉ Wall-mounted single-lever basin mixer without pop-up waste - Brushed Dark Platinum

LISSÉ

36 860 845  
mm [inches]



## Flow rate chart



## Codes & Standards

ADA

ASME  
A112.18.1/CSA  
B125.1

NSF/ANSI 372

NSF/ANSI/CAN  
61

Water Sense





LISSÉ Wall-mounted single-lever basin mixer without pop-up waste - Brushed  
Dark Platinum

---

LISSÉ

36 860 845

Certificates

---

IAPMO\_N-4976 (2). DVGW\_DW-6512DN0435. IAPMO\_8834 (2). IAPMO\_6397 (2). WRAS\_2107018.

36 860 845

