

## META Wall-mounted single-lever basin mixer without pop-up waste - Brushed Light Gold

META

36 861 660 Product version from 7/1/2023



- 250mm projection
- fixed spout
- circular, air-enriched flow
- hole diameter spout 37 mm
- hole diameter single-lever mixer 57 mm
- rosette for spout Ø 55mm
- rosette for mixer Ø 78mm
- max. flow 4.5 l/min
- lead-free
- This product can help a building meet the requirements of Green Building Rating Systems, e.g. LEED®, BREEAM®, DGNB

	Brushed Light Gold	36 861 660-27 0010
	Chrome	36 861 660-00 0010
	Brushed Platinum	36 861 660-06 0010
	Dark Chrome	36 861 660-19 0010
	Light Gold	36 861 660-26 0010
	Matte Black	36 861 660-33 0010
	Brushed Bronze	36 861 660-42 0010
	Brushed Champagne (22kt Gold)	36 861 660-46 0010
	Champagne (22kt Gold)	36 861 660-47 0010
	Brushed Chrome	36 861 660-93 0010
	Brushed Dark Platinum	36 861 660-99 0010

### Required miscellaneous



#### **Concealed wall-mounted single-lever mixer -** 35 860 970-90 0010

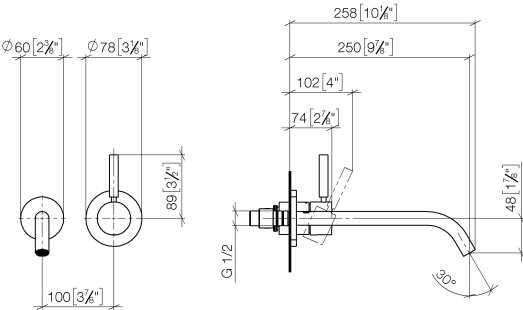
- min. recess depth 80 mm
- Rough can be rotated to position the lever on top or to the left of the spout.
- max. recess depth 95 mm



META Wall-mounted single-lever basin mixer without pop-up waste - Brushed Light Gold

META

36 861 660 Product version from 7/1/2023  
mm [inches]

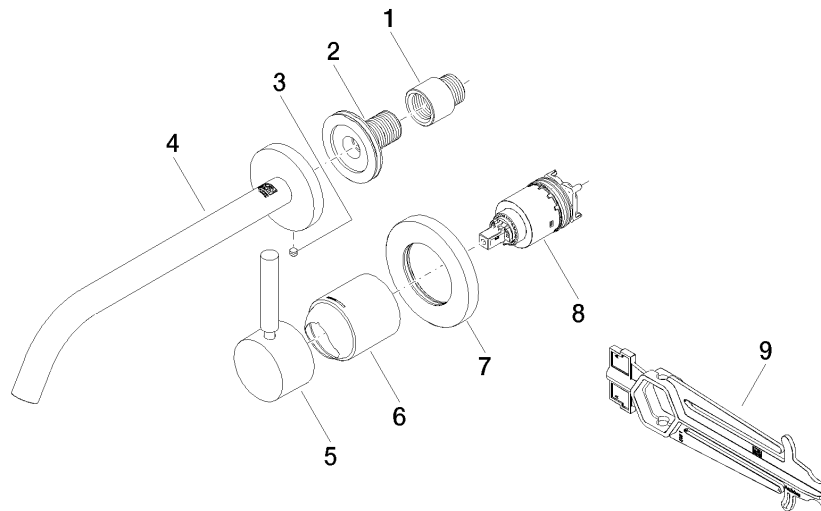


Codes & Standards

ADA	California Energy Commission (CEC)	NSF372	NSF61
-----	------------------------------------	--------	-------

Certificates and sustainability

IAPMO\_N-4976 IAPMO\_6397



## Spare parts list

No.	Item Number	Name	Quantity used	Delivery time
2	90 24 03 280 00 90	nipple	1.00	2
3	09 31 11 112 90	pin	1.00	60
5	90 20 66 007 00-27	handle	1.00	30
6	09 11 02 288-27	cover	1.00	60
8	90 15 05 064 01 90	cartridge	1.00	2
4	90 28 22 324 01-27	spout	1.00	30
1	09 24 03 072 10 90	nipple	1.00	2
9	90 30 09 064 00 90	key	1.00	2
7	90 27 62 011 00-27	rosette	1.00	30