


## MEM Wall-mounted single-lever basin mixer without pop-up waste - Brushed Champagne (22kt Gold)

MEM

36 861 782



- 207mm projection
- fixed spout
- rectangular, air-enriched flow
- hole diameter spout 37 mm
- hole diameter single-lever mixer 57 mm
- rosette for spout 80 x 60mm
- rosette for mixer 80 x 80mm
- max. flow 4.5 l/min
- lead-free
- This product can help a building meet the requirements of Green Building Rating Systems, e.g. LEED®, BREEAM®, DGNB

	Brushed Champagne (22kt Gold)	36 861 782-46 0010
	Chrome	36 861 782-00 0010
	Brushed Platinum	36 861 782-06 0010
	Platinum	36 861 782-08 0010
	Dark Chrome	36 861 782-19 0010
	Brushed Durabronze (23kt Gold)	36 861 782-28 0010
	Champagne (22kt Gold)	36 861 782-47 0010
	Brushed Dark Platinum	36 861 782-99 0010

### Required miscellaneous



#### **Concealed wall-mounted single-lever mixer -** 35 860 970-90 0010

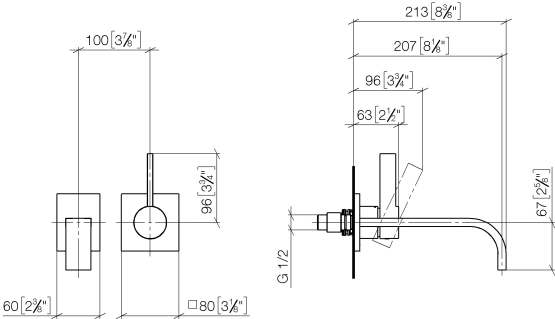
- max. recess depth 95 mm
- min. recess depth 80 mm
- Rough can be rotated to position the lever on top or to the left of the spout.

MEM Wall-mounted single-lever basin mixer without pop-up waste - Brushed Champagne (22kt Gold)

MEM

36 861 782

mm [inches]



Codes & Standards

ADA	ASME A112.18.1	California Energy Commission (CEC)	cUPC
NSF372	NSF61		

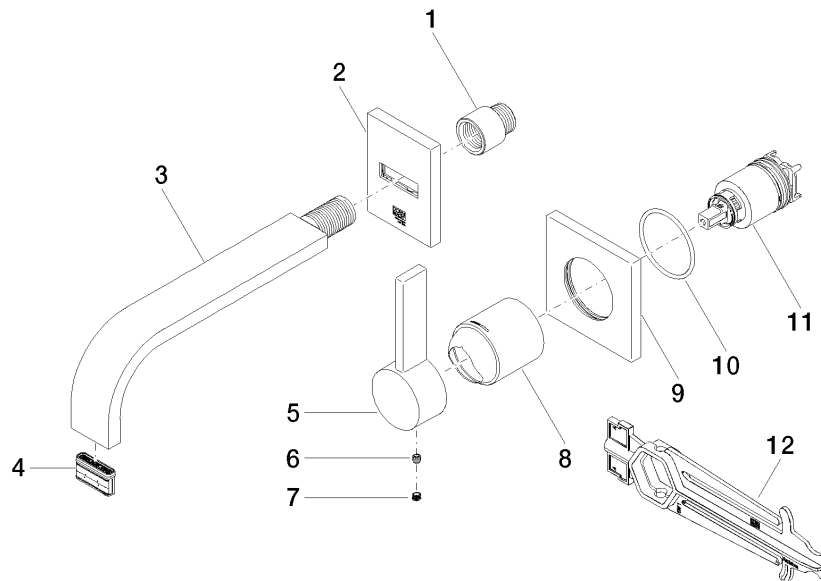
Certificates and sustainability

IAPMO_N-4976	IAPMO_6397	IAPMO_4976 (	
--------------	------------	--------------	--

## MEM Wall-mounted single-lever basin mixer without pop-up waste - Brushed Champagne (22kt Gold)

MEM

36 861 782



### Spare parts list

No.	Item Number	Name	Quantity used	Delivery time
4	90 29 03 118 00 90	aerator	1.00	2
1	09 24 03 072 10 90	nipple	1.00	2
9	09 27 78 039-46	rosette	1.00	60
11	90 15 05 064 01 90	cartridge	1.00	2
2	90 27 78 055 00-46	rosette	1.00	30
3	04 28 22 149 10-46	spout	1.00	30
8	09 11 02 288-46	cover	1.00	60
5	09 20 78 058-46	handle	1.00	60
6	90 31 11 030 00 90	pin	1.00	2
7	90 31 20 109 00 90	plug	1.00	2
10	90 14 10 049 00 90	seal	1.00	2
12	90 30 09 064 00 90	key	1.00	2