

## META Wall-mounted single-lever basin mixer with individual rosettes - Champagne (22kt Gold)

META

36 862 660 Product version from 7/1/2023



- 90° spout
- 190mm projection
- fixed spout
- circular, air-enriched flow
- hole diameter spout 37 mm
- hole diameter single-lever mixer 57 mm
- rosette for spout Ø 55mm
- rosette for mixer Ø 78mm
- max. flow 4.5 l/min
- lead-free
- This product can help a building meet the requirements of Green Building Rating Systems, e.g. LEED®, BREEAM®, DGNB

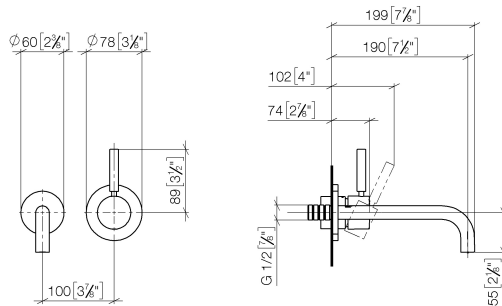
	Champagne (22kt Gold)	36 862 660-47 0010
	Chrome	36 862 660-00 0010
	Brushed Platinum	36 862 660-06 0010
	Dark Chrome	36 862 660-19 0010
	Light Gold	36 862 660-26 0010
	Brushed Light Gold	36 862 660-27 0010
	Matte Black	36 862 660-33 0010
	Brushed Bronze	36 862 660-42 0010
	Brushed Champagne (22kt Gold)	36 862 660-46 0010
	Brushed Chrome	36 862 660-93 0010
	Brushed Dark Platinum	36 862 660-99 0010

## META Wall-mounted single-lever basin mixer with individual rosettes - Champagne (22kt Gold)

META

36 862 660 Product version from 7/1/2023

mm [inches]



### Codes & Standards

ADA

California Energy  
Commission  
(CEC)

EPA WaterSense

NSF372

NSF61

WaterSense



### Certificates and sustainability

IAPMO\_N-4976

IAPMO\_6397

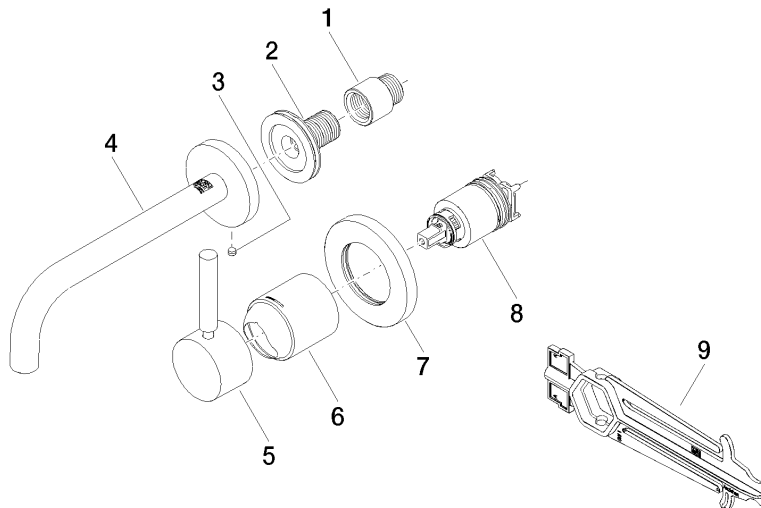
IAPMO\_8834

## META Wall-mounted single-lever basin mixer with individual rosettes - Champagne (22kt Gold)

META

36 862 660 Product version from 7/1/2023

Parts for other  
finishes can be found  
here: [Chrome](#)



### Spare parts list

No.	Item Number	Name	Quantity used	Delivery time
	8 90 15 05 064 01 90	cartridge	1.00	2
	1 09 24 03 072 10 90	nipple	1.00	2
	9 90 30 09 064 00 90	key	1.00	2
	6 09 11 02 288-47	cover	1.00	30
	7 90 27 62 011 00-47	rosette	1.00	30
	2 90 24 03 280 00 90	nipple	1.00	2
	5 90 20 66 007 00-47	handle	1.00	30
	3 09 31 11 112 90	pin	1.00	60
	4 90 28 22 351 01-47	spout	1.00	30