

META Wall-mounted single-lever basin mixer without pop-up waste - Brushed Bronze

META

36 867 660 Product version from 7/1/2023



- 125mm projection
- fixed spout
- circular, air-enriched flow
- hole diameter spout 35 mm
- hole diameter single-lever mixer 57 mm
- rosette for single-lever mixer Ø 78mm
- rosette for spout Ø 60mm
- max. flow 4.5 l/min
- lead-free
- This product can help a building meet the requirements of Green Building Rating Systems, e.g. LEED®, BREEAM®, DGNB

	Brushed Bronze	36 867 660-42 0010
	Chrome	36 867 660-00 0010
	Brushed Platinum	36 867 660-06 0010
	Light Gold	36 867 660-26 0010
	Brushed Light Gold	36 867 660-27 0010
	Matte Black	36 867 660-33 0010
	Brushed Champagne (22kt Gold)	36 867 660-46 0010
	Champagne (22kt Gold)	36 867 660-47 0010
	Brushed Chrome	36 867 660-93 0010
	Brushed Dark Platinum	36 867 660-99 0010

Required miscellaneous



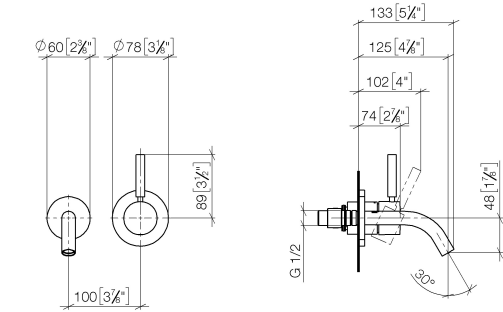
- Concealed wall-mounted single-lever mixer -** 35 860 970-90 0010
- min. recess depth 80 mm
 - max. recess depth 95 mm
 - Rough can be rotated to position the lever on top or to the left of the spout.



META Wall-mounted single-lever basin mixer without pop-up waste - Brushed Bronze

META

36 867 660 Product version from 7/1/2023
mm [inches]



Codes & Standards

ADA	ASME A112.18.1	California Energy Commission (CEC)	cUPC
NSF372	NSF61		

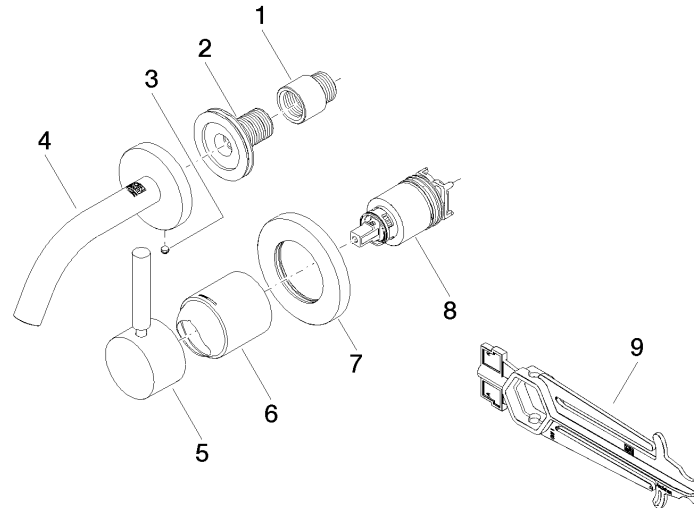
Certificates and sustainability

IAPMO_N-4976	IAPMO_6397	IAPMO_4976 (
--------------	------------	--------------

META Wall-mounted single-lever basin mixer without pop-up waste - Brushed Bronze

META

36 867 660 Product version from 7/1/2023



Spare parts list

No.	Item Number	Name	Quantity used	Delivery time
6	09 11 02 288-42	cover	1.00	60
3	09 31 11 148 90	pin	1.00	2
9	90 30 09 064 00 90	key	1.00	2
2	90 24 03 280 00 90	nipple	1.00	2
1	09 24 03 072 10 90	nipple	1.00	2
5	90 20 66 007 00-42	handle	1.00	30
8	90 15 05 064 01 90	cartridge	1.00	2
7	90 27 62 011 00-42	rosette	1.00	30
4	90 28 22 363 00-42	spout	1.00	30