

META META SLIM Wall-mounted single-lever basin mixer without pop-up waste - Chrome

META

36 867 662 Product version from 7/1/2023



- 125mm projection
- fixed spout
- circular, air-enriched flow
- hole diameter single-lever mixer 57 mm
- hole diameter spout 35 mm
- rosette for single-lever mixer Ø 78mm
- rosette for spout Ø 60mm
- max. flow 4.5 l/min
- lead-free
- This product can help a building meet the requirements of Green Building Rating Systems, e.g. LEED®, BREEAM®, DGNB

	Chrome	36 867 662-00 0010
	Brushed Platinum	36 867 662-06 0010
	Light Gold	36 867 662-26 0010
	Brushed Light Gold	36 867 662-27 0010
	Matte Black	36 867 662-33 0010
	Brushed Bronze	36 867 662-42 0010
	Brushed Champagne (22kt Gold)	36 867 662-46 0010
	Champagne (22kt Gold)	36 867 662-47 0010
	Brushed Chrome	36 867 662-93 0010
	Brushed Dark Platinum	36 867 662-99 0010

Required miscellaneous

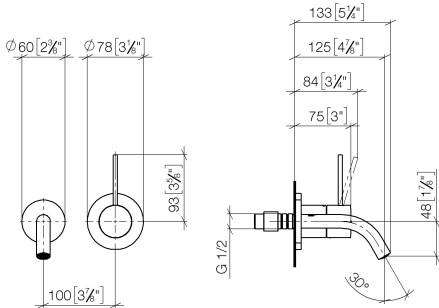


- Concealed wall-mounted single-lever mixer -** 35 860 970-90 0010
- min. recess depth 80 mm
 - max. recess depth 95 mm
 - Rough can be rotated to position the lever on top or to the left of the spout.

META META SLIM Wall-mounted single-lever basin mixer without pop-up waste - Chrome

META

36 867 662 Product version from 7/1/2023
mm [inches]



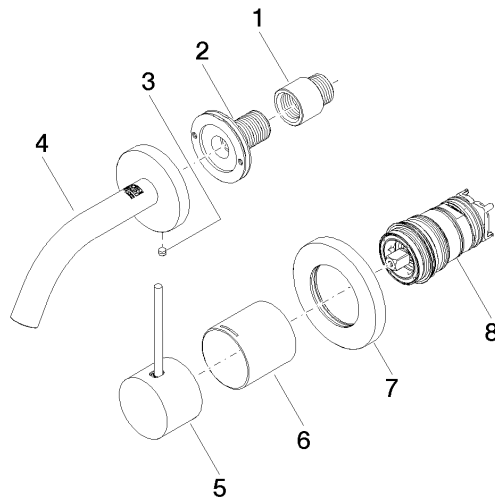
Codes & Standards

ADA	ASME A112.18.1	California Energy Commission (CEC)	cUPC
EPA WaterSense	NSF372	NSF61	WaterSense



Certificates and sustainability

IAPMO_N-4976	IAPMO_6397	IAPMO_8834	IAPMO_4976 (
--------------	------------	------------	--------------



Spare parts list

No.	Item Number	Name	Quantity used	Delivery time
4	90 28 22 363 00-00	spout	1.00	10
1	09 24 03 072 10 90	nipple	1.00	2
8	90 15 05 044 02 90	cartridge	1.00	2
5	90 20 66 022 00-00	handle	1.00	10
6	09 11 02 336-00	sleeve	1.00	10
7	90 27 62 011 00-00	rosette	1.00	10
3	09 31 11 112 90	pin	1.00	60
2	90 24 03 280 00 90	nipple	1.00	2