





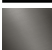
MEM Wall-mounted single-lever basin mixer without pop-up waste - Chrome

MEM

36 867 782



- 125mm projection
- fixed spout
- rectangular, air-enriched flow
- hole diameter spout 35 mm
- hole diameter single-lever mixer 57 mm
- rosette for spout 80 x 60mm
- rosette for mixer 80 x 80mm
- max. flow 4.5 l/min
- lead-free
- This product can help a building meet the requirements of Green Building Rating Systems, e.g. LEED®, BREEAM®, DGNB

	Chrome	36 867 782-00 0010
	Brushed Platinum	36 867 782-06 0010
	Platinum	36 867 782-08 0010
	Brushed Durabronze (23kt Gold)	36 867 782-28 0010
	Brushed Dark Platinum	36 867 782-99 0010

Required miscellaneous

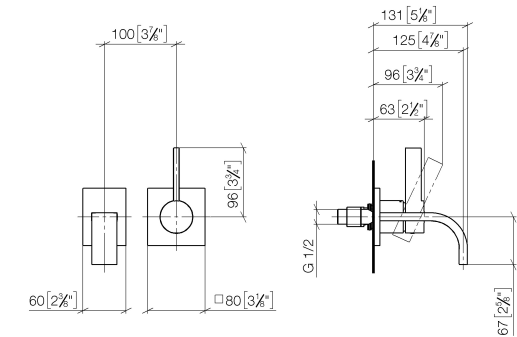


Concealed wall-mounted single-lever mixer - 35 860 970-90 0010

- min. recess depth 80 mm
- max. recess depth 95 mm
- Rough can be rotated to position the lever on top or to the left of the spout.

36 867 782

mm [inches]



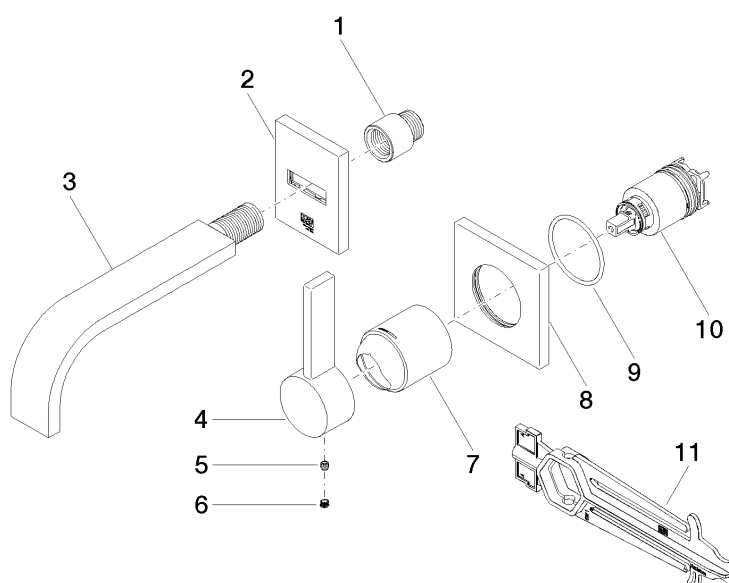
Codes & Standards

ADA	ASME A112.18.1	California Energy Commission (CEC)	cUPC
EPA WaterSense	NSF372	NSF61	WaterSense

Certificates and sustainability

IAPMO_6397	IAPMO_N-4976	IAPMO_4976 (IAPMO_8834
------------	--------------	--------------	------------

36 867 782



Spare parts list

No.	Item Number	Name	Quantity used	Delivery time
	2 90 27 78 055 00-00	rosette	1.00	10
	4 09 20 78 058-00	handle	1.00	10
	3 90 28 22 357 01-00	spout	1.00	10
	7 09 11 02 288-00	cover	1.00	10
	10 90 15 05 064 01 90	cartridge	1.00	2
	1 09 24 03 072 10 90	nipple	1.00	2
	8 09 27 78 039-00	rosette	1.00	10
	11 90 30 09 064 00 90	key	1.00	2
	6 90 31 20 109 00 90	plug	1.00	2
	5 90 31 11 030 00 90	pin	1.00	2
	9 90 14 10 049 00 90	seal	1.00	2